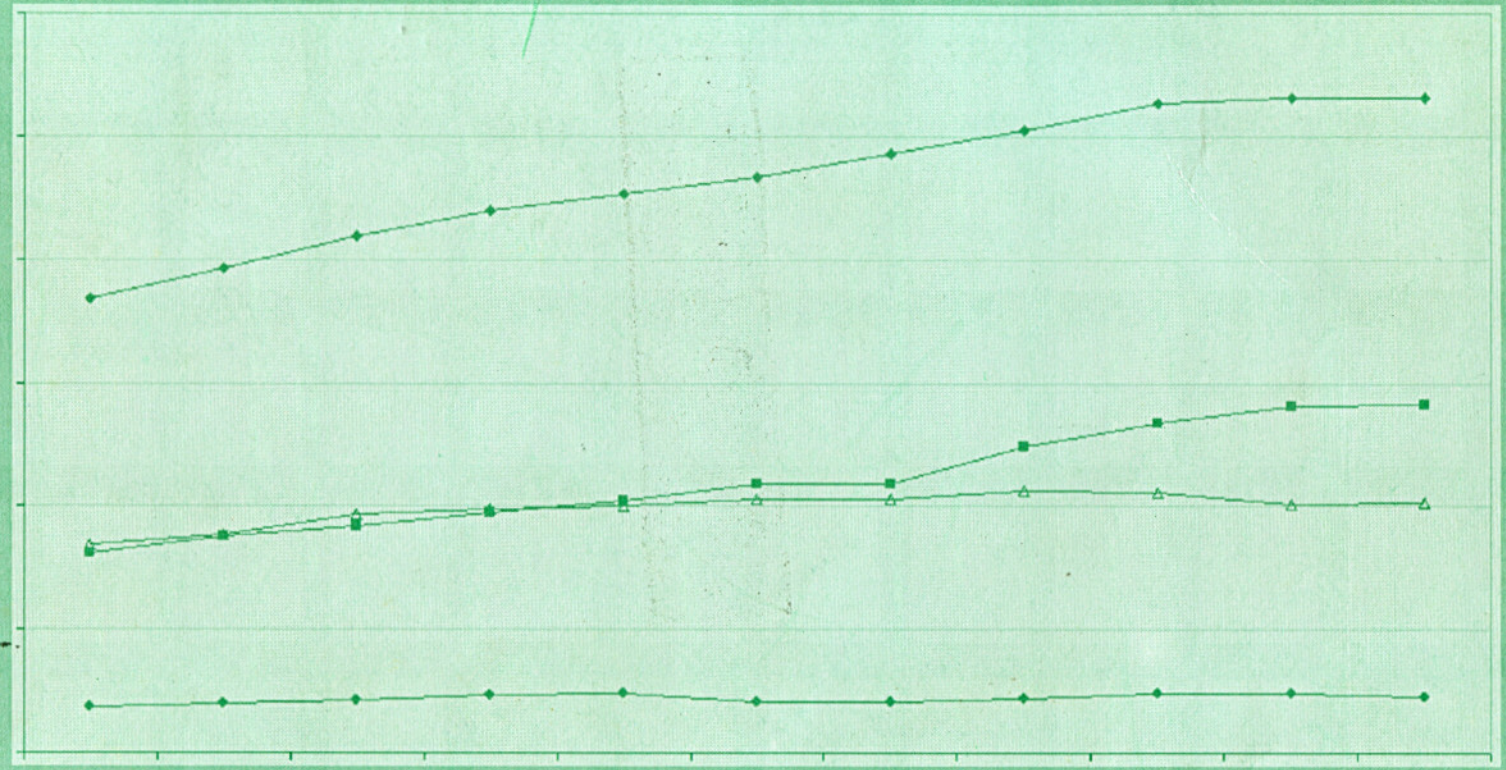


# EDUCATIONAL STATISTICS 2002



**MINISTRY OF EDUCATION**  
**REPUBLIC OF MALDIVES**

## TABLE OF CONTENTS

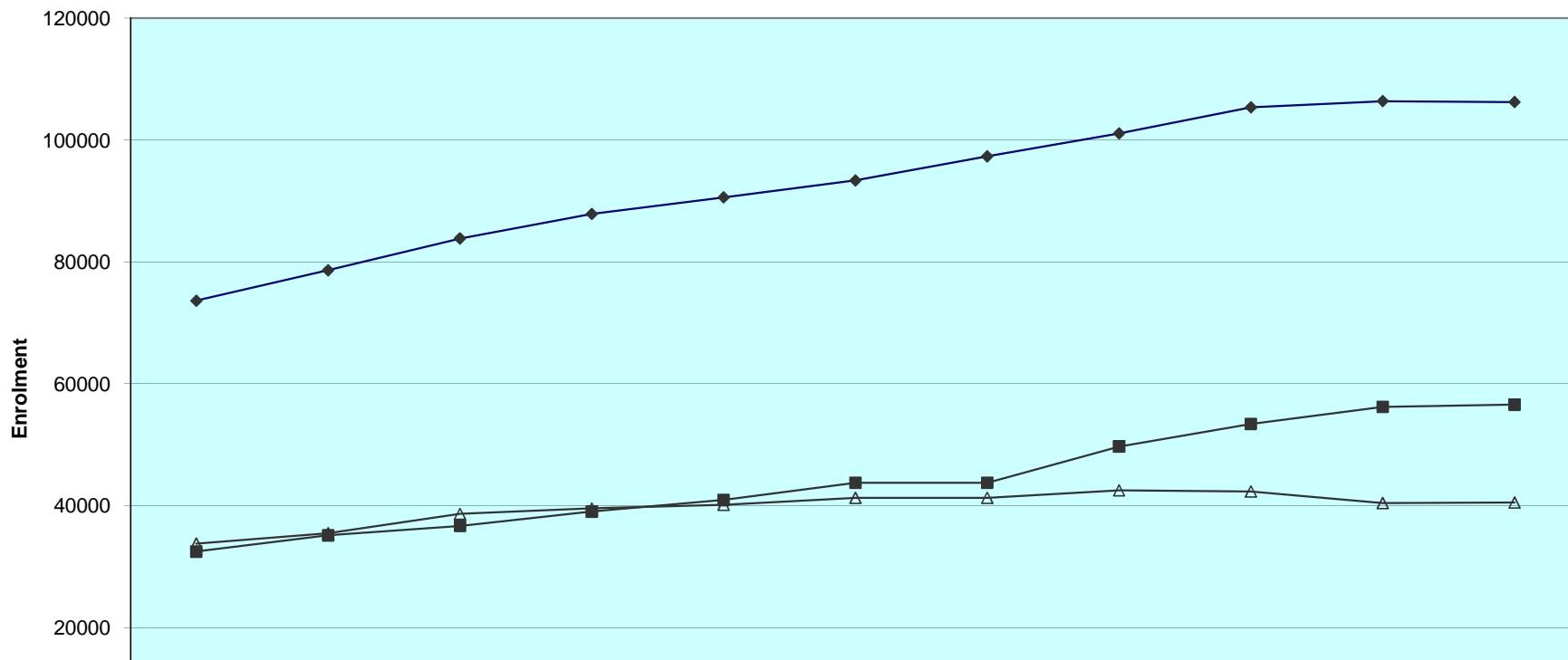
	Page
2002	1
2002	3
2002	4
2002	6
2002	8
2002	10
2002	12
2002	14
2002	15
2002	16
2002	17
2002	18
2002	19
2002	20
2002	21
2002	22
2002	23
2002	24
2002	25
2002	26
2002	27
2002	28
2002	29
2002	30
2002	31
2002	32
2002	33
2002	34
2002	35
2002	36
2002	37
2002	39
2002	40
2002	41
2002	42
2002	43
2002	46
2002	47
2002	49
	50

ދިވެހިރާއްޖޭގެ ޖުމްހޫރިއްޔާއި ރާއްޖޭގެ ބޭރުގެ ސަރަޙައްދުގައި (ގްރޯސް)  
STUDENT ENROLMENT IN MALDIVES (GROSS)  
1992 - 2002

Provision	1992	1993	1994	1995	1996	1997	1998	1999	2000	2001	2002
<b>Republic</b>											
Total	73642	78639	83855	87878	90597	93375	97323	101081	105356	106391	106220
Government Schools	32475	35138	36693	39032	40935	43757	46352	49721	53413	56224	56579
Community Schools	33779	35486	38662	39565	40153	41295	42159	42524	42352	40448	40519
Private Schools	7388	8015	8500	9281	9509	8323	8812	8836	9591	9719	9122
<b>Male'</b>											
Total	22802	23177	23500	24570	25641	26190	27057	27714	28547	28306	28243
Government Schools	12568	12962	13226	13255	13567	14124	14588	15167	15820	16456	16845
Community Schools	6014	5838	5810	6368	7418	7875	8348	8382	8326	7749	8030
Private Schools	4220	4377	4464	4947	4656	4191	4121	4165	4401	4101	3368
<b>Atolls</b>											
Total	50840	55462	60355	63308	64956	67185	70266	73367	76809	78085	77977
Government Schools	19907	22176	23467	25777	27368	29633	31764	34554	37593	39768	39734
Community Schools	27765	29648	32852	33197	32735	33420	33811	34142	34026	32699	32489
Private Schools	3168	3638	4036	4334	4853	4132	4691	4671	5190	5618	5754

ދިވެހިރާއްޖޭގެ ޖުމްހޫރިއްޔުގެ ސަރުކާރުގެ ޖަނަވަރުގެ ދަށުން (އެސީ ޖެނަރަލް)  
(ނަންޑަރުގެ ތެރެއިން ޖެނަރަލް ޖެނަރަލް ޖެނަރަލް)

STUDENT ENROLMENT IN MALDIVES (GROSS)  
(BY TYPE OF PROVISION)  
1992 - 2002



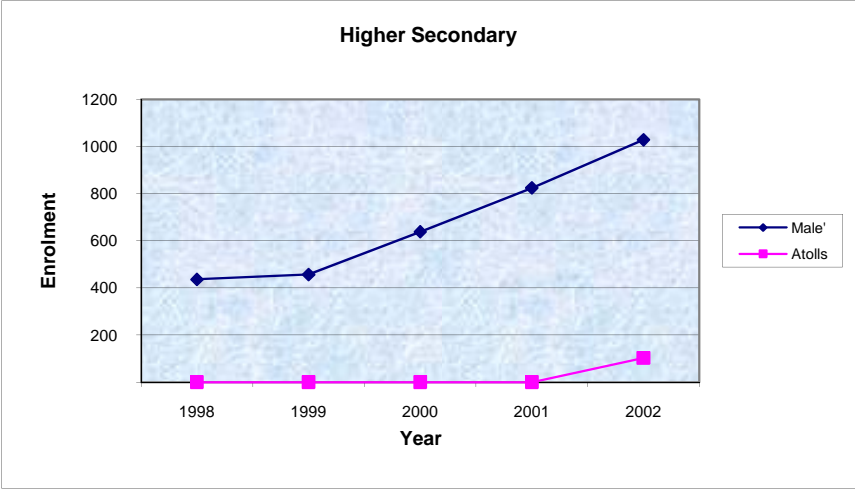
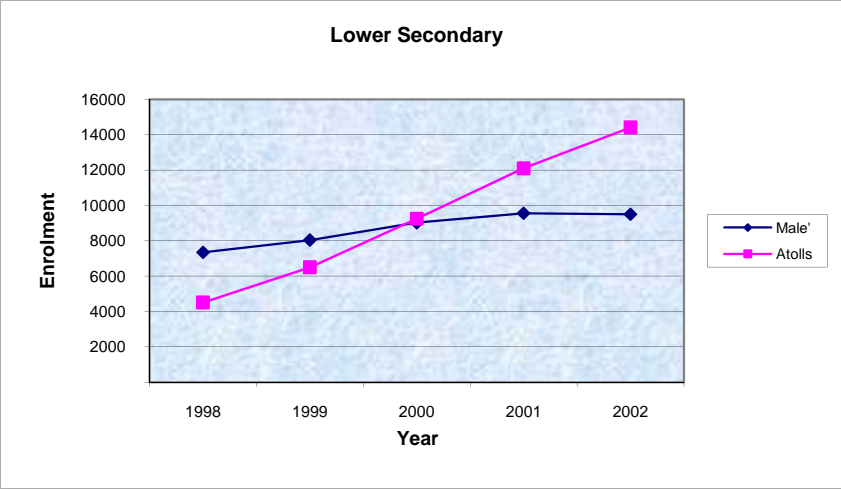
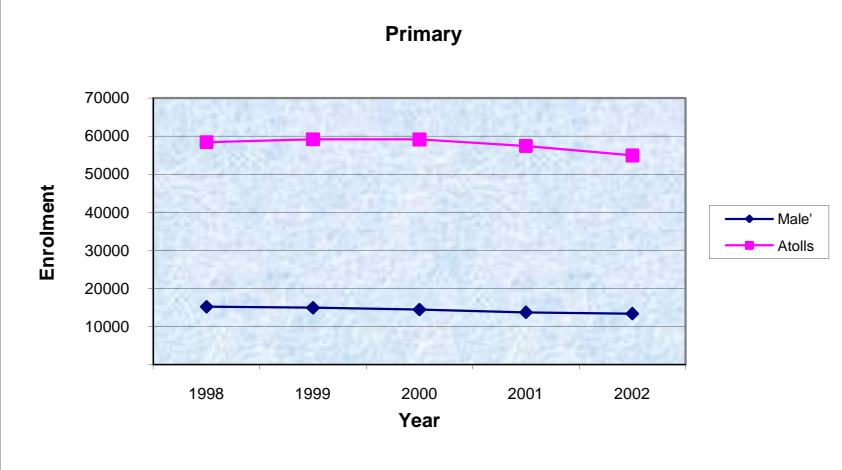
విద్యా విభాగం  
 విద్యార్థుల పాఠశాలలో చేరుకోవడం  
 ENROLMENT TRENDS BY LEVELS  
 (1998 - 2002)

LEVEL	1998			1999			2000			2001			2002		
	FEMALE	MALE	TOTAL	FEMALE	MALE	TOTAL	FEMALE	MALE	TOTAL	FEMALE	MALE	TOTAL	FEMALE	MALE	TOTAL
1- Pre - Primary (NURS, LKG, UKG)	5570	5938	11508	5815	6216	12031	6324	6570	12894	6335	6474	12809	6323	6563	12886
2- Primary (Grades 1 - 7)	36101	37418	73519	36203	37847	74050	35764	37758	73522	34384	36670	71054	32801	35441	68242
3- Lower Secondary (Grades 8 - 10)	6033	5812	11845	7471	7060	14531	9518	8736	18254	11368	10276	21644	12656	11247	23903
4- Higher Secondary (Grades 11 - 12)	186	250	436	192	265	457	274	364	638	330	494	824	504	627	1131
5- Special Classes	6	9	15	6	6	12	21	27	48	31	29	60	24	34	58
<b>TOTAL</b>	<b>47896</b>	<b>49427</b>	<b>97323</b>	<b>49687</b>	<b>51394</b>	<b>101081</b>	<b>51901</b>	<b>53455</b>	<b>105356</b>	<b>52448</b>	<b>53943</b>	<b>106391</b>	<b>52308</b>	<b>53912</b>	<b>106220</b>

(2002 2000) 2002 2000 2002 2000 2002 2000 2002 2000 2002 2000 2002 2000 2002 2000 2002 2000 2002 2000 2002 2000 2002 2000

ENROLMENT TRENDS BY LEVELS - MALE' AND ATOLLS  
(1999 - 2002)

LEVEL	1999						2000						2001						2002					
	MALE'			ATOLLS			MALE'			ATOLLS			MALE'			ATOLLS			MALE'			ATOLLS		
	FEMALE	MALE	TOTAL	FEMALE	MALE	TOTAL	FEMALE	MALE	TOTAL	FEMALE	MALE	TOTAL	FEMALE	MALE	TOTAL	FEMALE	MALE	TOTAL	FEMALE	MALE	TOTAL	FEMALE	MALE	TOTAL
Primary (Grades 1 - 7)	7402	7505	14907	28801	30342	59143	7150	7285	14435	28614	30473	59087	6894	6793	13687	27490	29877	57367	6695	6660	13355	26106	28781	54887
Lower Secondary (Grades 8 - 10)	4026	4007	8033	3445	3053	6498	4613	4405	9018	4905	4331	9236	4975	4576	9551	6393	5700	12093	5165	4332	9497	7491	6915	14406
Higher Secondary (Grades 11 - 12)	192	265	457				274	364	638				330	494	824				457	571	1028	47	56	103
<b>TOTAL</b>	<b>11620</b>	<b>11777</b>	<b>23397</b>	<b>32246</b>	<b>33395</b>	<b>65641</b>	<b>12037</b>	<b>12054</b>	<b>24091</b>	<b>33519</b>	<b>34804</b>	<b>68323</b>	<b>12199</b>	<b>11863</b>	<b>24062</b>	<b>33883</b>	<b>35577</b>	<b>69460</b>	<b>12317</b>	<b>11563</b>	<b>23880</b>	<b>33644</b>	<b>35752</b>	<b>69396</b>



ދިވެހިރާއްޖޭގެ ޖުމްހޫރިއްޔާ ގުޅިގެން  
ENROLMENT BY LEVEL AND TYPE  
(MARCH 2002)

LEVEL	Pre-Primary			Primary			Lower Secondary			Higher Secondary			Special Classes			Total			
	Female	Male	Total	Female	Male	Total	Female	Male	Total	Female	Male	Total	Female	Male	Total	Female	Male	Total	
<b>REPUBLIC</b>	Government	0	0	0	18348	20385	38733	8712	7945	16657	504	627	1131	24	34	58	27588	28991	56579
	Community	3767	3865	7632	13839	14564	28403	2383	2101	4484	0	0	0	0	0	0	19989	20530	40519
	Private	2556	2698	5254	614	492	1106	1561	1201	2762	0	0	0	0	0	0	4731	4391	9122
<b>ATOLLS</b>	Government	0	0	0	13257	14880	28137	6023	5471	11494	47	56	103	0	0	0	19327	20407	39734
	Community	1835	1917	3752	12646	13684	26330	1216	1191	2407	0	0	0	0	0	0	15697	16792	32489
	Private	2353	2476	4829	203	217	420	252	253	505	0	0	0	0	0	0	2808	2946	5754
<b>MALE'</b>	Government	0	0	0	5091	5505	10596	2689	2474	5163	457	571	1028	24	34	58	8261	8584	16845
	Community	1932	1948	3880	1193	880	2073	1167	910	2077	0	0	0	0	0	0	4292	3738	8030
	Private	203	222	425	411	275	686	1309	948	2257	0	0	0	0	0	0	1923	1445	3368
<b>TOTAL</b>	<b>6323</b>	<b>6563</b>	<b>12886</b>	<b>32801</b>	<b>35441</b>	<b>68242</b>	<b>12656</b>	<b>11247</b>	<b>23903</b>	<b>504</b>	<b>627</b>	<b>1131</b>	<b>24</b>	<b>34</b>	<b>58</b>	<b>52308</b>	<b>53912</b>	<b>106220</b>	

Pre-Primary: Nursery, LKG, UKG

Primary: Grades 1 - 7

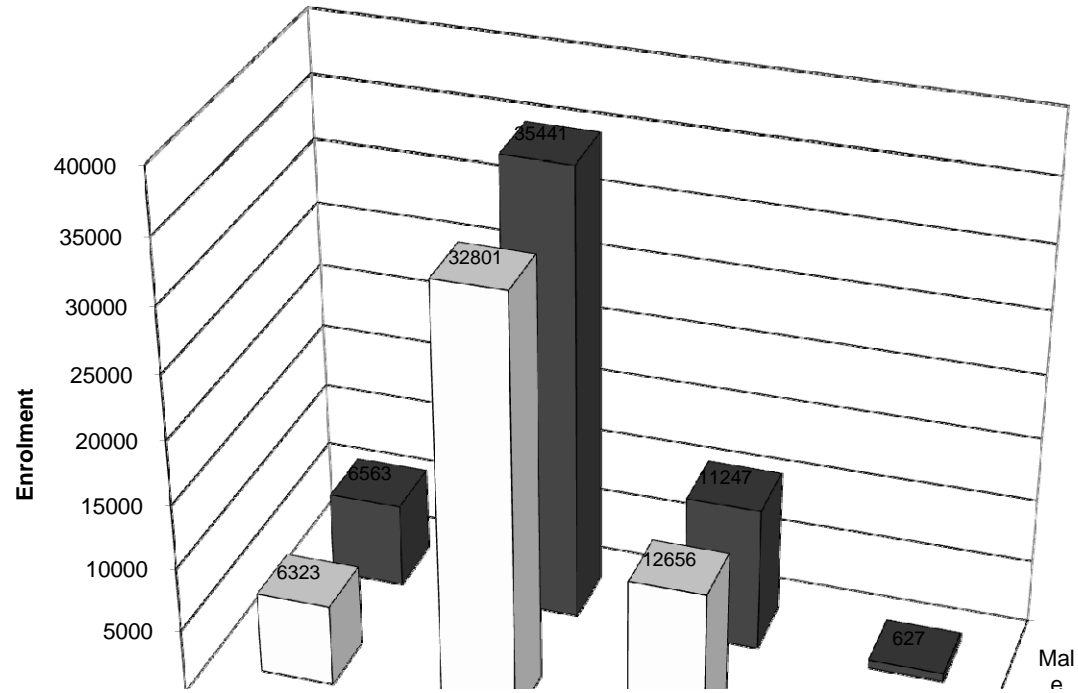
Lower Secondary: Grades 8 - 10

Higher Secondary: Grades 11 - 12



ދިވެހިސަރުކާރުގެ ގެޒެޓް ގައި ބަޔާންކޮށްފައިވާ ގޮތުން

TOTAL STUDENT ENROLMENT IN THE MALDIVES BY LEVEL  
(MARCH 2002)

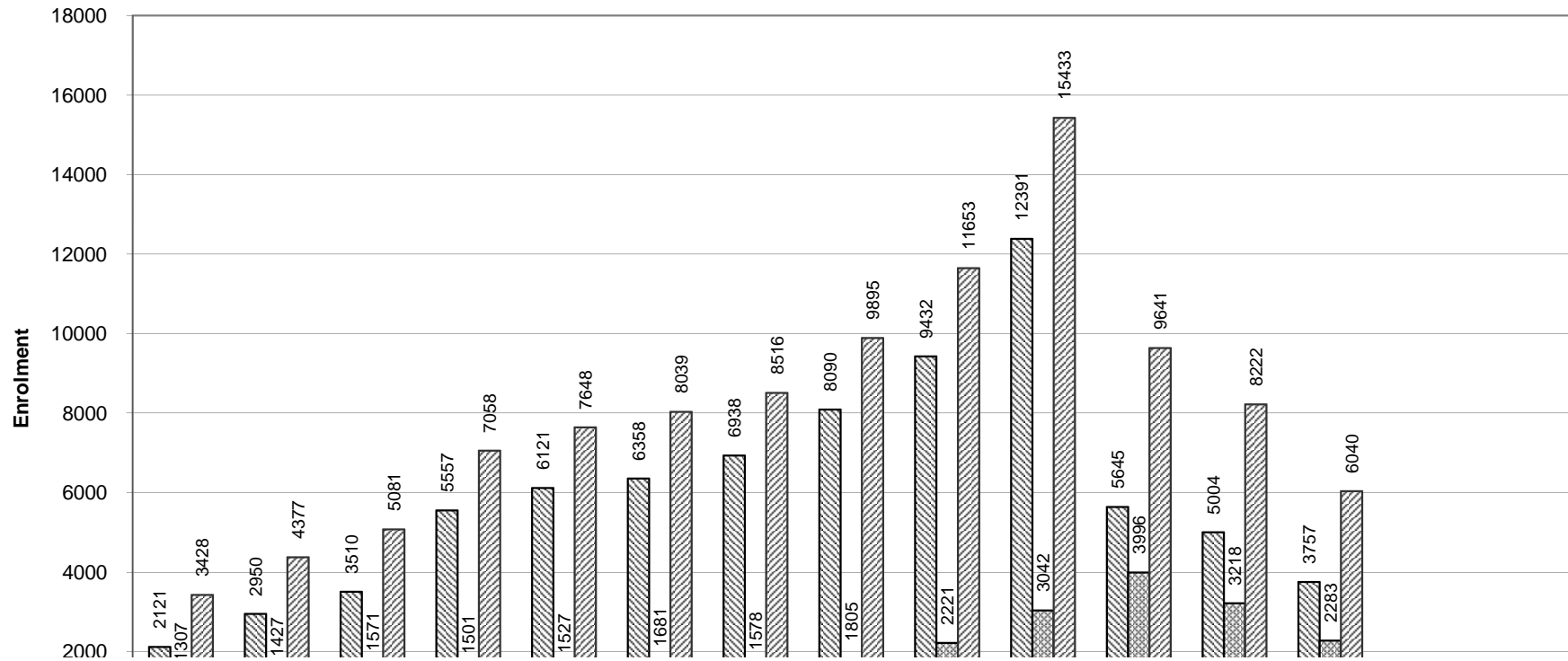


ދިވެހިރާއްޖޭގެ ޖުމްހޫރިއްޔާ ގުޅިގެން ދިވެހިރާއްޖޭގެ ސަރުކާރުގެ ޖުމްހޫރިއްޔާ ގުޅިގެން

ENROLMENT IN MALE' AND ATOLLS BY GRADE AND GENDER  
(MARCH 2002)

Name of Atoll	NURS		LKG		UKG		GR. 1		GR. 2		GR. 3		GR. 4		GR. 5		GR. 6		GR. 7		GR. 8		GR. 9		GR. 10		GR. 11		GR. 12		Special			SUBTOTAL		TOTAL	% National							
	F	M	F	M	F	M	F	M	F	M	F	M	F	M	F	M	F	M	F	M	F	M	F	M	F	M	F	M	F	M	F	M	F	M	F	M	Total	Total						
Haa Alifu	104	84	135	163	166	186	191	189	216	234	249	239	276	326	302	367	380	399	484	508	198	175	181	193	114	111												2996	3174	6170	5.81			
Haa Dhaalu	81	92	159	173	181	193	254	272	254	286	313	311	312	321	339	375	343	429	677	732	161	120	144	120	161	114													3379	3538	6917	6.51		
Shaviyani	12	10	32	34	39	50	163	161	171	179	195	182	188	210	233	270	263	287	365	411	257	238	147	171	123	122														2188	2325	4513	4.25	
Noonu	47	47	79	60	57	64	162	176	168	218	161	214	193	196	215	215	294	282	386	353	141	134	152	111	94	94														2149	2164	4313	4.06	
Raa	72	60	56	82	100	104	241	215	217	248	284	278	283	324	367	422	358	427	503	526	285	278	190	214	105	77														3061	3255	6316	5.95	
Baa	27	43	100	94	97	99	100	134	120	157	123	152	168	165	188	200	227	293	270	316	161	182	147	159	116	150	4	17												1848	2161	4009	3.77	
Lhaviyani	60	66	85	96	85	96	117	111	126	133	130	155	138	155	162	164	186	246	261	297	130	116	138	114	82	99														1700	1848	3548	3.34	
Kaafu	66	46	57	56	76	82	100	142	116	163	125	146	127	139	151	242	177	219	237	245	77	80	67	57	31	26															1407	1643	3050	2.87
Alifu Alifu	29	26	35	42	33	39	70	82	70	75	51	78	80	82	67	98	112	131	136	123	31	30	23	24	30	22															767	852	1619	1.52
Alifu Dhaalu	61	77	35	40	45	66	98	96	102	106	81	98	117	126	124	168	163	197	199	235	107	123	83	89	71	75															1286	1496	2782	2.62
Vaavu	7	5	7	10	15	10	15	23	20	22	22	26	28	21	31	43	36	49	43	48	27	36	18	30	19	16															288	339	627	0.59
Meemu	18	13	13	14	30	36	56	61	78	78	71	60	81	69	105	103	131	136	126	142	60	78	112	82	74	84															955	956	1911	1.80
Faafu	4	3	10	7	10	10	75	78	54	59	67	69	68	81	76	83	106	103	118	115	49	52	64	63	39	43															740	766	1506	1.42
Dhaalu	20	20	24	14	17	16	78	78	68	80	66	94	94	98	87	105	125	139	160	200	56	62	59	56	43	38															897	1000	1897	1.79
Thaa	59	84	70	81	76	92	153	134	139	157	136	169	150	174	192	194	219	254	327	311	195	195	143	126	78	83															1937	2054	3991	3.76
Laamu	19	24	49	54	82	94	176	174	171	220	227	224	202	251	223	297	272	312	331	408	224	220	182	168	139	143															2297	2589	4886	4.60
Gaafu Alifu	43	53	44	36	69	59	137	151	157	155	138	150	160	169	149	210	191	205	202	210	83	109	115	97	111	85															1599	1689	3288	3.10
Gaafu Dhaalu	114	104	159	118	170	164	189	200	223	206	216	185	240	238	292	319	276	307	314	330	191	146	168	154	131	103															2683	2574	5257	4.95
Gnaviyani	46	58	99	92	86	107	72	92	142	142	121	151	129	138	140	152	192	268	238	222	99	86	150	110	84	55															1598	1673	3271	3.08
Seenu	165	152	203	233	249	260	269	272	293	298	281	320	287	334	295	325	330	368	611	671	356	297	338	245	337	235	43	39												4057	4049	8106	7.63	
Male'	634	673	718	709	783	788	724	777	748	779	787	894	773	805	912	893	1130	1091	1621	1421	2256	1740	1790	1428	1119	1164	283	305	174	266	24	34									14476	13767	28243	26.59
Atolls	1054	1067	1451	1499	1683	1827	2716	2841	2905	3216	3057	3301	3321	3617	3738	4352	4381	5051	5988	6403	2888	2757	2621	2383	1982	1775	47	56													37832	40145	77977	
<b>TOTAL</b>	<b>1688</b>	<b>1740</b>	<b>2169</b>	<b>2208</b>	<b>2466</b>	<b>2615</b>	<b>3440</b>	<b>3618</b>	<b>3653</b>	<b>3995</b>	<b>3844</b>	<b>4195</b>	<b>4094</b>	<b>4422</b>	<b>4650</b>	<b>5245</b>	<b>5511</b>	<b>6142</b>	<b>7609</b>	<b>7824</b>	<b>5144</b>	<b>4497</b>	<b>4411</b>	<b>3811</b>	<b>3101</b>	<b>2939</b>	<b>330</b>	<b>361</b>	<b>174</b>	<b>266</b>	<b>24</b>	<b>34</b>								52308	53912	106220	100.00	

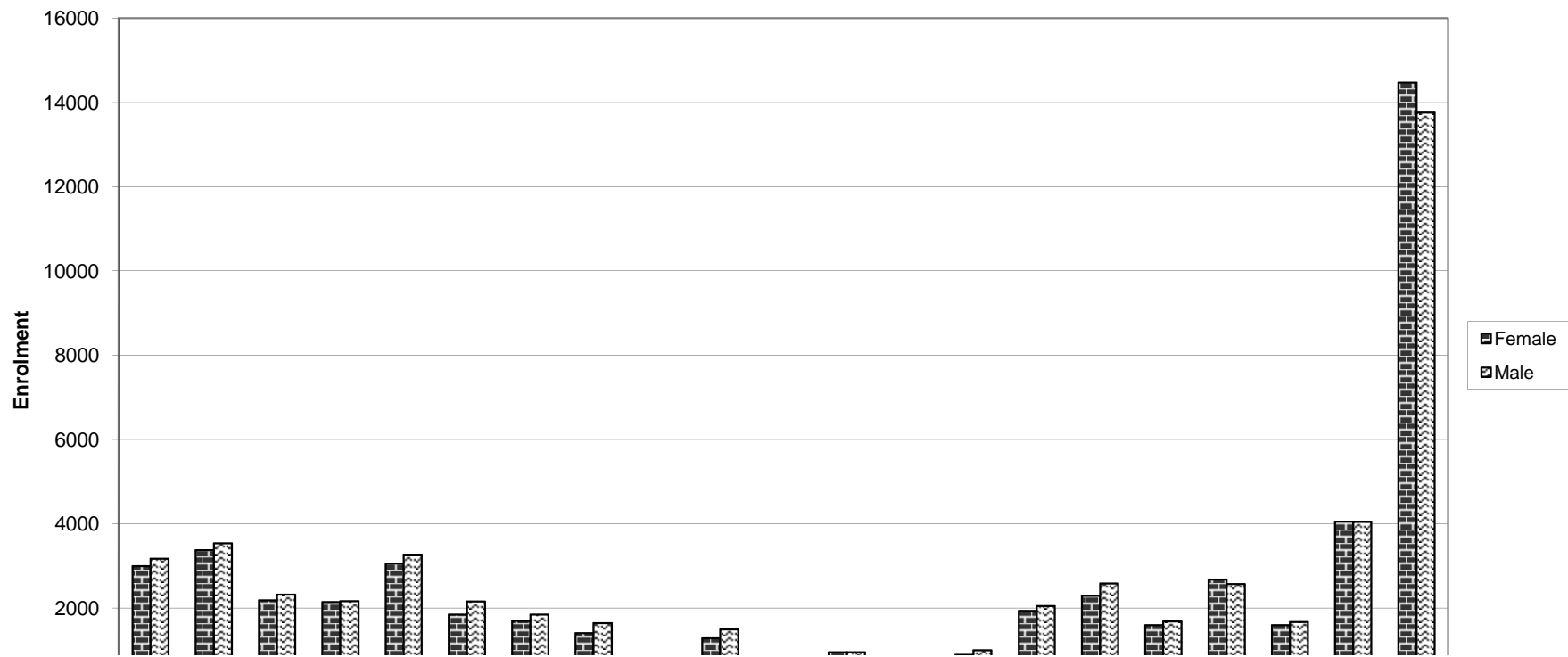
TOTAL ENROLMENT IN MALE' AND ATOLLS BY GRADE  
(MARCH 2002)



ދިވެހިރާއްޖޭގެ ބޭރުގެ ރާއްޖޭގެ ރައްދުކުރުމަށް ބޭނުންކުރާ ފަރާތްތަކުގެ ވަނަ ބަޔާން  
 ENROLMENT IN MALE' AND ATOLLS BY GENDER  
 (MARCH 2002)

Name of Atoll	Female	Male	Total	% Female	% Male	% Total
Haa Alifu	2996	3174	6170	48.56	51.44	5.81
Haa Dhaalu	3379	3538	6917	48.85	51.15	6.51
Shaviyani	2188	2325	4513	48.48	51.52	4.25
Noonu	2149	2164	4313	49.83	50.17	4.06
Raa	3061	3255	6316	48.46	51.54	5.95
Baa	1848	2161	4009	46.10	53.90	3.77
Lhaviyani	1700	1848	3548	47.91	52.09	3.34
Kaafu	1407	1643	3050	46.13	53.87	2.87
Alifu Alifu	767	852	1619	47.37	52.63	1.52
Alifu Dhaalu	1286	1496	2782	46.23	53.77	2.62
Vaavu	288	339	627	45.93	54.07	0.59
Meemu	955	956	1911	49.97	50.03	1.80
Faafu	740	766	1506	49.14	50.86	1.42
Dhaalu	897	1000	1897	47.29	52.71	1.79
Thaa	1937	2054	3991	48.53	51.47	3.76
Laamu	2297	2589	4886	47.01	52.99	4.60
Gaafu Alifu	1599	1689	3288	48.63	51.37	3.10
Gaafu Dhaalu	2683	2574	5257	51.04	48.96	4.95
Gnaviyani	1598	1673	3271	48.85	51.15	3.08
Seenu	4057	4049	8106	50.05	49.95	7.63
Male'	14476	13767	28243	51.26	48.74	26.59
<b>TOTAL</b>	<b>52308</b>	<b>53912</b>	<b>106220</b>	<b>49.24</b>	<b>50.76</b>	<b>100.00</b>

𑌒𑌔𑌕𑌖𑌗𑌘𑌙𑌚𑌛𑌜𑌝𑌞𑌟𑌠𑌡𑌢𑌣𑌤𑌥𑌦𑌧𑌨𑌩𑌪𑌫𑌬𑌭𑌮𑌯𑌰𑌱𑌲𑌳𑌴𑌵𑌶𑌷𑌸𑌹𑌺𑌻𑌼𑌽𑌾𑌿  
 ENROLMENT IN MALE' AND ATOLLS BY GENDER  
 (MARCH 2002)



ދިވެހިރާއްޖޭގެ ސަރުކާރުގެ ގެޒެޓް ގައި ބަޔާންކޮށްފައިވާ ގޮތުން

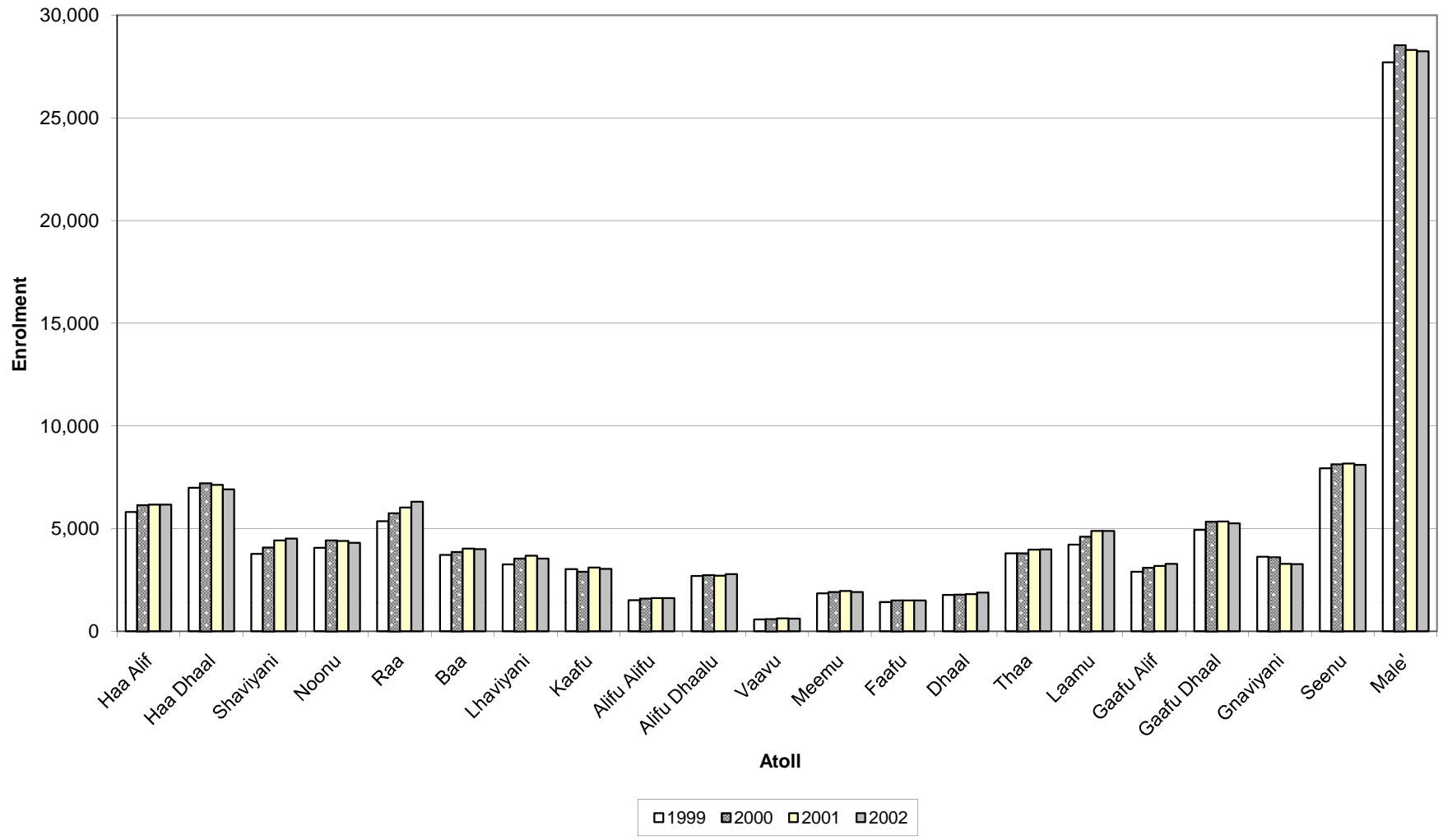
ENROLMENT TRENDS BY MALE' AND ATOLLS

(2001 - 2002)

Name of Atoll	2001						2002					
	Female	change *	Male	change *	Total	change *	Female	change *	Male	change *	Total	change *
Haa Alifu	3,032	0.46%	3,135	-0.06%	6,167	0.19%	2,996	-1.19%	3,174	1.24%	6,170	0.05%
Haa Dhaalu	3,561	-2.09%	3,568	-0.36%	7,129	-1.23%	3,379	-5.11%	3,538	-0.84%	6,917	-2.97%
Shaviyani	2,176	6.67%	2,247	9.40%	4,423	8.04%	2,188	0.55%	2,325	3.47%	4,513	2.03%
Noonu	2,181	-1.31%	2,224	-0.27%	4,405	-0.79%	2,149	-1.47%	2,164	-2.70%	4,313	-2.09%
Raa	2,911	3.89%	3,115	5.38%	6,026	4.65%	3,061	5.15%	3,255	4.49%	6,316	4.81%
Baa	1,883	2.73%	2,143	5.10%	4,026	3.98%	1,848	-1.86%	2,161	0.84%	4,009	-0.42%
Lhaviyani	1,809	3.31%	1,880	4.33%	3,689	3.83%	1,700	-6.03%	1,848	-1.70%	3,548	-3.82%
Kaafu	1,435	8.06%	1,673	5.42%	3,108	6.62%	1,407	-1.95%	1,643	-1.79%	3,050	-1.87%
Alifu Alifu	778	2.10%	849	0.47%	1,627	1.24%	767	-1.41%	852	0.35%	1,619	-0.49%
Alifu Dhaalu	1,259	-1.64%	1,452	-0.62%	2,711	-1.09%	1,286	2.14%	1,496	3.03%	2,782	2.62%
Vaavu	296	5.34%	333	5.38%	629	5.36%	288	-2.70%	339	1.80%	627	-0.32%
Meemu	957	-1.14%	1,013	6.41%	1,970	2.60%	955	-0.21%	956	-5.63%	1,911	-2.99%
Faafu	731	-0.54%	772	-0.39%	1,503	-0.46%	740	1.23%	766	-0.78%	1,506	0.20%
Dhaalu	856	0.35%	953	0.53%	1,809	0.44%	897	4.79%	1,000	4.93%	1,897	4.86%
Thaa	1,935	3.09%	2,043	5.64%	3,978	4.38%	1,937	0.10%	2,054	0.54%	3,991	0.33%
Laamu	2,326	4.45%	2,560	7.38%	4,886	5.96%	2,297	-1.25%	2,589	1.13%	4,886	0.00%
Gaafu Alifu	1,566	2.15%	1,620	3.38%	3,186	2.77%	1,599	2.11%	1,689	4.26%	3,288	3.20%
Gaafu Dhaalu	2,681	0.60%	2,671	-0.56%	5,352	0.02%	2,683	0.07%	2,574	-3.63%	5,257	-1.78%
Gnaviyani	1,642	-8.11%	1,650	-10.03%	3,292	-9.09%	1,598	-2.68%	1,673	1.39%	3,271	-0.64%
Seenu	4,102	-0.15%	4,067	1.02%	8,169	0.43%	4,057	-1.10%	4,049	-0.44%	8,106	-0.77%
Male'	14,331	0.88%	13,975	-2.55%	28,306	-0.84%	14,476	1.01%	13,767	-1.49%	28,243	-0.22%
<b>TOTAL</b>	<b>52,448</b>	<b>1.05%</b>	<b>53,943</b>	<b>0.91%</b>	<b>106,391</b>	<b>0.98%</b>	<b>52,308</b>	<b>-0.27%</b>	<b>53,912</b>	<b>-0.06%</b>	<b>106,220</b>	<b>-0.16%</b>

\* Change column shows the change over previous year.

ދިވެހިރާއްޖޭގެ ޖުމްހޫރިއްޔާ ގުޅިގެން  
 ENROLMENT TRENDS BY MALE' AND ATOLLS  
 (1999 - 2002)







ދިވެހިސަރުކާރުގެ ގެޒެޓްގައި ބަޔާންކުރި ގަވާއިދުގެ ތެރޭގައި ހިމެނޭ ގޮތަށް  
 SCHOOLS' ENROLMENTS IN HAA ALIFU ATOLL BY GRADE AND GENDER  
 (MARCH 2002)

SCHOOL	Type	NURS		LKG		UKG		GR. 1		GR. 2		GR. 3		GR. 4		GR. 5		GR. 6		GR. 7		GR. 8		GR. 9		GR. 10		GR. 11		GR. 12		Special		SUBTOTAL		TOTAL	
		F	M	F	M	F	M	F	M	F	M	F	M	F	M	F	M	F	M	F	M	F	M	F	M	F	M	F	M	F	M	F	M				
HA. ATHOLHU MADHRASA (HOARAFUSHI)	G							32	28	30	28	28	33	48	51	37	42	56	59	100	114	56	64	49	73	30	29							466	521	987	
HA. ATHOLHU THAULEEMEE MARUKAZU (DHIDHDHOO)	G							33	21	35	47	43	52	44	56	42	57	47	59	123	139	69	39	90	70	53	49							579	589	1168	
MADHRASATHUL SULTHAAN MOHAMED THAKURUFANUL AUZAM (UTHEEM)	G							12	12	9	9	15	9	6	10	15	19	18	18	6	7													81	84	165	
BAARASHU MADHRASA	C							16	26	17	15	29	24	22	32	39	61	43	45	16	19													182	222	404	
BERINMADHOO MAKTHAB	C					2	6	2	1	5	1	1	2	3	7	1	4																	14	21	35	
IHAVANDHOO MADHRASA	C							22	39	42	47	34	25	47	50	45	51	91	71	104	76	53	49	32	34	31	33							501	475	976	
MAARANDHOO MADHRASA	C					6	11	10	6	15	10	5	11	10	20	10	11	16	12	11	20														83	101	184
GHAZEE MOHAMED PRE SCHOOL (DHIDHDHOO)	C	22	20	29	30	34	38																											85	88	173	
MADHRASATHUL SOBAH (FILLADHOO)	C							11	7	7	11	10	10	9	15	8	17	10	10	25	33														80	103	183
MADHRASATHUL SHAHEED ALI THAKURUFANU (THAKANDHOO)	C			7	1	8	7	6	8	6	9	10	6	6	15	13	7	12	20	10	10														78	83	161
MADHRASATHUL SHAIKH IBRAHIM (KELAA)	C							15	21	20	22	24	22	23	18	28	41	29	43	39	41	20	23	10	16									208	247	455	
MAKTHABUL AMEEN (HATHIFUSHI)	C			2	2	5				2	2	2	4	1	1	5	5	2	2		2														14	23	37
MULHADHOO MAKTHAB (MULHADHOO)	C	6	1	2	6	4	2	4	2	4	3	10	5	12	4	5	3	5	10	6	1														58	37	95
MURADHOO SCHOOL	C							7	2	5	3	7	13	25	18	22	13	23	14	15	14														104	77	181
THURAAKUNU MADHRASA	C			9	9	8	4	6	5	7	5	8	8	2	10	8	15	5	13	8	7														61	76	137
ULIGAMU MADHRASA	C							6	3	3	12	6	3	8	7	13	7	12	11	4	10														52	53	105
VASHAFAR MADHRASA	C	9	13	12	15	7	16	9	8	9	10	17	12	10	12	11	14	11	12	17	15														112	127	239
LILLY PRE SCHOOL (KELAA)	C	9	8	12	22	22	13																												43	43	86
MAKTHABUL AHADHIYYA (BAARAH)	C			8	10	15	9																												23	19	42
BAARASHU MAKTHAB	C			6	9	10	13																												16	22	38
WAFAR PRE SCHOOL (IHAVANDHOO)	P	10	6	15	17	17	13																												42	36	78
UMAR MOHAMED PRE SCHOOL (FILLADHOO)	P	12	9	12	8	9	13																												33	30	63
DHOONI THUNDI GAMIYYA NURSARY (UTHEEM)	P	20	14																																20	14	34
ADAM SALEEM HANDHAANEE PRE-SCHOOL (HOARAFUSHI)	P	13	8	19	28	22	30																												54	66	120
ETHUMAA PRE-SCHOOL (THAKANDHOO)	P	3	5	2	6	2	6																												7	17	24
<b>TOTAL</b>		25	104	84	135	163	166	186	191	189	216	234	249	239	276	326	302	367	380	399	484	508	198	175	181	193	114	111					2996	3174	6170		

G - Government, C - Community, P - Private

ދިވެހިސަރުކާރުގެ ގެޒެޓްގައި ބަޔާންކުރި މަޢުލޫމާތު ތަކުގެ ބަނޑުލިފަތްކުރުން  
 SCHOOLS' ENROLMENTS IN HAA DHAALU ATOLL BY GRADE AND GENDER  
 (MARCH 2002)

SCHOOL	Type	NURS		LKG		UKG		GR. 1		GR. 2		GR. 3		GR. 4		GR. 5		GR. 6		GR. 7		GR. 8		GR. 9		GR. 10		GR. 11		GR. 12		Special		SUBTOTAL		TOTAL					
		F	M	F	M	F	M	F	M	F	M	F	M	F	M	F	M	F	M	F	M	F	M	F	M	F	M	F	M	F	M	F	M	F	M						
HDH. ATHOLHU MADHRASA (VAIKARADHOO)	G							17	11	18	15	17	22	17	29	23	25	25	39	51	64	36	32	24	31	15	10								243	278	521				
HDH. ATHOLHU THAULEEMEE MARUKAZU (KULHUDUFUSHI)	G							97	105	100	109	114	111	137	121	119	137	115	159	269	308															951	1050	2001			
HANMAADHOO SCHOOL	G							12	10	16	17	29	24	16	15	20	32	36	29	35	31															164	158	322			
JALAALUDDIN SCHOOL (KULHUDHUFFUSHI)	G																			84	86	125	88	120	89	146	104									475	367	842			
FARIDHOO SCHOOL	C	1	2	3	2	2	2	2	3	3	8	6	2			3	1																			20	20	40			
FINEY SCHOOL	C	10	6	5	5			8	7	5	7	9	6	5	9	4	10	1	8	3	6																50	64	114		
HIRIMARADHOO SCHOOL	C			6	2	15	16	4	5	2	10	2	8	7	6	13	9	8	5	5	6																62	67	129		
KUNBURUDHOO SCHOOL	C	6	8					3	4	1	5		5	3	3	2	2	2		3																	20	27	47		
KUMUNDHOO SCHOOL	C							16	15	24	16	26	10	18	22	26	20	30	35	21	24																	161	142	303	
KURINBEE SCHOOL	C			6	10	5	5	9	9	6	7	10	8	7	6	7	7	10	6	12	9																72	67	139		
MADHRASATHUL HUSSAINIYYA (MAAVIDHOO)	C			1	3	7	8	1	4	3	3	6	4	13	13	10	8	10	9	3	5																54	57	111		
MAKUNUDHOO MADHRASA	C			15	12	19	20	24	17	15	21	15	14	20	18	22	16	14	17	45	53																	189	188	377	
NAAVIDHOO SCHOOL	C	5	6	5	5	9	8	12	8	6	9	7	7	8	12	10	10	5	19	10	7																	77	91	168	
NELLAIDHOO MADHRASA	C			10	8	12	10	5	16	13	16	15	13	12	10	13	22	17	19	14	17																	111	131	242	
NEYKURENDHOO MADHRASA	C	8	9	6	10	8	5	11	20	8	13	17	25	14	20	20	30	35	39	33	41																	160	212	372	
NOLHIVARAM SCHOOL	C							26	28	25	24	30	45	28	31	40	41	30	37	81	60																		260	266	526
NOLHIVARAM FARU MADHRASA	C			13	9	5	1	7	10	9	6	10	7	7	6	7	5	5	8	8	15																	71	67	138	
AMEER AMEEN SCHOOL (KULHUDUFUSHI)	C	35	39	54	75	75	80																															164	194	358	
SULAIMAANIYYAA PRE-SCHOOL (VAIKARADHOO)	P	12	15	20	15	16	23																															48	53	101	
ATHUFAAL PRE-SCHOOL (KUMUNDHOO)	P	4	7	15	17	8	15																															27	39	66	
<b>TOTAL</b>		20	81	92	159	173	181	193	254	272	254	286	313	311	312	321	339	375	343	429	677	732	161	120	144	120	161	114								3379	3538	6917			

G - Government, C - Community, P - Private



*ދިވެހިސަރުކާރުގެ ގެޒެޓް ލިޔުންތަކުގެ ތެރެއިން*  
**SCHOOLS' ENROLMENTS IN NOONU ATOLL BY GRADE AND GENDER**  
**(MARCH 2002)**

SCHOOL	Type	NURS		LKG		UKG		GR. 1		GR. 2		GR. 3		GR. 4		GR. 5		GR. 6		GR. 7		GR. 8		GR. 9		GR. 10		GR. 11		GR. 12		Special		SUBTOTAL		TOTAL
		F	M	F	M	F	M	F	M	F	M	F	M	F	M	F	M	F	M	F	M	F	M	F	M	F	M	F	M	F	M	F	M			
N. ATHOLHU MADHRASA (MANADHOO)	G							12	15	12	25	17	15	15	19	24	23	25	34	57	63	37	37	48	28	19	12							266	271	537
N. ATHOLU THAULEEMEE MARUKAZU (VELIDHOO)	G							15	27	22	25	22	32	34	29	32	26	38	37	80	79	50	47	66	42	44	40							403	384	787
MEYNA SCHOOL (HOLHUDHOO)	G							19	14	21	28	23	27	25	29	19	35	42	44	58	64	42	32	38	41	31	42							318	356	674
FODHDHOO SCHOOL	C							5	2	2	5	2	2	2	2	7	7	5	8	2	2												25	28	53	
HENBADHOO MAKTHAB	C							5	6	7	14	9	14	5	9	14	9	18	11	13	5												71	68	139	
KENDHIKULHUDHOO MADHRASA	C							13	14	14	10	11	15	18	7	19	20	21	23	15	13												111	102	213	
KEDHIKULHUDHOO SCHOOL	C							11	9	10	9	7	14	17	12	17	13	17	23	35	27												114	107	221	
KUDAFAREE MADHRASA	C							7	11	6	7	5	14	9	9	4	10	7	7	14	10	12	18										64	86	150	
LANDHOO SCHOOL	C							23	23	14	10	14	11	18	14	14	10	28	10	29	23												140	101	241	
LHOHI MADHRASA	C							10	8	8	14	8	17	11	13	8	10	19	22	13	15												77	99	176	
MAAFARU SCHOOL	C							16	11	22	29	13	11	15	15	17	16	33	24	31	19												147	125	272	
MAALHENDHOO MAKTHAB	C							13	12	13	12	12	13	11	13	12	14	11	13	11	12													83	89	172
MAGOODHOO SCHOOL	C							2	5	4	7	7	7	4	3	4	3	1	3	3	3												22	31	53	
HIDHAYAA SCHOOL (MILADHOO)	C							11	19	13	23	18	22	6	21	25	18	27	25	25	18												125	146	271	
HOLHUDHOO PRE- SCHOOL	C	18	12	8	9	7	11																									33	32	65		
MANADHOO PRE-SCHOOL	C	8	4	16	13	15	15																									39	32	71		
ROASHANEE PRE-SCHOOL	P	11	14	22	15	22	23																									55	52	107		
SKID PRE- SCHOOL (KENDHIKULHUDHOO)	P			7	8	6	8																									13	16	29		
AMIRREE NURSERY CLASS (LANDHOO)	P	7	13	17	13																											24	26	50		
SAVAA - THUTHUKUDHINGE THAULEEMDHEY CLASS (HOLHUDHOO)	P	3	4	9	2	7	7																									19	13	32		
TOTAL		20	47	47	79	60	57	64	162	176	168	218	161	214	193	196	215	215	294	282	386	353	141	134	152	111	94	94				2149	2164	4313		

G - Government, C - Community, P - Private







كورالو كورالو كورالو كورالو كورالو كورالو كورالو كورالو كورالو كورالو  
 KAAFU ATOLL SCHOOLS' ENROLMENTS IN KAAFU ATOLL BY GRADE AND GENDER  
 (MARCH 2002)

SCHOOL	Type	NURS		LKG		UKG		GR. 1		GR. 2		GR. 3		GR. 4		GR. 5		GR. 6		GR. 7		GR. 8		GR. 9		GR. 10		GR. 11		GR. 12		Special		SUBTOTAL		TOTAL		
		F	M	F	M	F	M	F	M	F	M	F	M	F	M	F	M	F	M	F	M	F	M	F	M	F	M	F	M	F	M	F	M	F	M	F	M	
K. ATHOLHU MADHRASA (KAASHIDHOO)	G							18	33	16	31	30	26	30	30	32	40	33	40	54	53	23	28	31	28	13	8							280	317	597		
K. ATHOLHU THAULEEMEE MARUKAZU (THULUSDHOO)	G							7	10	11	12	3	15	15	7	11	21	13	16	20	20	12	5	11	10	7	9							110	125	235		
THAULEEMAAI MASAKAIY UGANNAIDHEY KUDAKUDHINGE MARUKAZU	G							7		8		4		7		16																			42	42	42	
DHIFUSHI MAKTHAB	C	21	14					10	17	19	20	10	7	20	18	17	21	18	18	18	16	6		6	1									145	132	277		
GAAFARU MADHRASA	C					16	12	8	9	14	12	14	13	10	5	17	23	14	22	19	15														112	111	223	
GULHEE MADHRASA	C	7	9	9	9	6	11	6	11	6	15	7	10	9	9	15	20	18	14	19	18														102	126	228	
GURAIHOO MADHRASA	C	16	12	14	15	15	18	16	18	10	17	21	25	11	24	22	37	35	33	33	26	3	8												196	233	429	
HIMMAFUSHEE SCHOOL	C			8	13	13	16	10	16	12	10	11	19	9	13	6	23	9	29	15	15														93	154	247	
HURAA SCHOOL	C	8	1	10	3	10	8	5	6	6	8	11	9	5	9	11	15	18	15	18	23		9	4	2										124	131	255	
MAAFUSHI MADHRASA	C							20	15	22	30	18	18	18	17	20	26	19	32	41	59	15	16	19	9	7	7								199	229	428	
MAVAHI-THUTHUKUDHINGE THAULEEMDHEY CLASS (KAASHIDHOO)	P	4	6	2	7	6	8																												12	21	33	
THULUSDHOO PRE-SCHOOL	P	10	4	14	9	10	9																													34	22	56
<b>TOTAL</b>		12	66	46	57	56	76	82	100	142	116	163	125	146	127	139	151	242	177	219	237	245	77	80	67	57	31	26							1407	1643	3050	

G - Government, C - Community, P - Private





ދިވެހިސަރުކާރުގެ ގެޒެޓްގައި އުލަޅާފައިވާ ގަވާއިދުގެ ދަށުން ސަރުކާރުގެ ސުކޯލްތަކުގައި ދިވެހިސަރުކާރުގެ ގެޒެޓްގައި އުލަޅާފައިވާ ގަވާއިދުގެ ދަށުން

SCHOOLS' ENROLMENTS IN ALIFU DHAALU ATOLL BY GRADE AND GENDER  
(MARCH 2002)

SCHOOL	Type	NURS		LKG		UKG		GR. 1		GR. 2		GR. 3		GR. 4		GR. 5		GR. 6		GR. 7		GR. 8		GR. 9		GR. 10		GR. 11		GR. 12		Special		SUBTOTAL		TOTAL				
		F	M	F	M	F	M	F	M	F	M	F	M	F	M	F	M	F	M	F	M	F	M	F	M	F	M	F	M	F	M	F	M							
ADH. ATHOLHU MADHRASA (MAAMIGILI)	G							31	20	34	35	17	23	24	28	40	55	34	50	57	56	32	33	37	25	21	19							327	344	671				
ADH. ATHOLHU THAULEEMEE MARUKAZU (MAHIBADHOO)	G							20	19	22	18	18	26	28	32	29	35	47	57	75	96	47	61	41	57	45	51									372	452	824		
DHANG'ETHEE MADHRASA	C	9	9	5	8	6	6	6	9	6	4	5	3	7	9	7	8	24	30	23	17	8	10	5	7	5	5									116	125	241		
DHIDHDHOO SCHOOL	C	2	4					1		3	2	2	2	1				2	1	2	3															13	12	25		
DHIGURASHU MADHRASA	C							4	9	3	6	6	4	4	7	5	10	12	12	5	11																39	59	98	
FENFUSHI MADHRASA	C							7	8	5	12	8	12	17	10	12	13	13	13	10	19	17	12														89	99	188	
HANGNAAMEEDHOO MADHRASA	C							10	5	8	8	9	11	11	13	10	8	15	16	18	18	3	7														84	86	170	
KUN'BURUDHOO MAKTHAB	C							3	13	6	6	6	3	7	8	4	12																				26	42	68	
MAHIBADHOO MAKTHAB	C	14	22	14	15	21	33																													49	70	119		
MANDHOO SCHOOL	C	17	18					3	7	3	4	3	1	5	4	4	6	3	3																		38	43	81	
OMADHOO MADHRASA	C	10	10	12	8	9	13	13	6	12	11	7	13	13	15	13	21	13	15	9	15																111	127	238	
HANGNAAMEEDHOO PRE-SCHOOL	C	9	14	4	9	9	14																														22	37	59	
<b>TOTAL</b>		12	61	77	35	40	45	66	98	96	102	106	81	98	117	126	124	168	163	197	199	235	107	123	83	89	71	75								1286	1496	2782		

G - Government, C - Community, P - Private







ދިވެހިސަރުކާރުގެ ގެޒެޓް ކަނޑައަޅާ ގޮތެއްގައި  
 SCHOOLS' ENROLMENTS IN DHAALU ATOLL BY GRADE AND GENDER  
 (MARCH 2002)

SCHOOL	Type	NURS		LKG		UKG		GR. 1		GR. 2		GR. 3		GR. 4		GR. 5		GR. 6		GR. 7		GR. 8		GR. 9		GR. 10		GR. 11		GR. 12		Special		SUBTOTAL		TOTAL
		F	M	F	M	F	M	F	M	F	M	F	M	F	M	F	M	F	M	F	M	F	M	F	M	F	M	F	M	F	M					
DH. ATHOLHU MADHRASA (MEEDHOO)	G							20	19	9	22	10	17	15	18	17	23	19	24	18	37	13	10	15	17	13	10					149	197	346		
DH. ATHOLHU THAULEEMEE MARUKAZU (KUDAHUVADHOO)	G							9	12	11	13	11	19	22	14	16	19	27	33	45	45	22	31	44	39	30	28					237	253	490		
BANDIDHOO MADHRASA	C							14	14	13	15	11	15	14	20	11	20	31	25	31	37	21	21									146	167	313		
GEMENDHOO SCHOOL	C	6	6					5	4	3	3	9	9	7	8	8	4	4	8	1	7											43	49	92		
HULHUDHELI SCHOOL	C							5	10	10	13	7	14	10	3	13	13	8	13	22	20											75	86	161		
MAAENBOODHOO MADHRASA	C							9	12	9	8	10	10	11	17	9	15	21	21	22	27											91	110	201		
RIN'BUDHOO SCHOOL	C			7	6	4	10	9	5	6	4	5	5	12	12	6	9	7	10	12	13											68	74	142		
VAANEE SCHOOL	C							7	2	7	2	3	5	3	6	7	2	8	5	9	14											44	36	80		
KUDAHUVADHOO PRE-SCHOOL	C	14	14	17	8	13	6																									44	28	72		
<b>TOTAL</b>		9		20	20	24	14	17	16	78	78	68	80	66	94	94	98	87	105	125	139	160	200	56	62	59	56	43	38			897	1000	1897		

G - Government, C - Community, P - Private

ދިވެހިސަރުކާރުގެ ގެޒެޓް ގައި ބަޔާންކުރި ގޮތުގައި

### SCHOOLS' ENROLMENTS IN THAA ATOLL BY GRADE AND GENDER (MARCH 2002)

SCHOOL	Type	NURS		LKG		UKG		GR. 1		GR. 2		GR. 3		GR. 4		GR. 5		GR. 6		GR. 7		GR. 8		GR. 9		GR. 10		GR. 11		GR. 12		Special		SUBTOTAL		TOTAL	
		F	M	F	M	F	M	F	M	F	M	F	M	F	M	F	M	F	M	F	M	F	M	F	M	F	M	F	M	F	M	F	M				
TH. ATHOLHU MADRASAA (GURAIIDHOO)	G							21	15	18	15	19	21	20	23	25	20	29	35	48	61	59	39	42	36	19	14							300	279	579	
TH. ATHOLHU THAULEEMEE MARUKAZU (THIMARAFUSHI)	G							17	25	29	33	22	29	22	31	33	36	25	47	39	39	29	57	34	54	18	45							268	396	664	
KIN'IDHOO SCHOOL	G							10	16	8	21	16	14	16	12	19	17	17	13	31	29	36	40	30	16	26	17							209	195	404	
BURLINEE MADHRASA	C							5	4	3	2	7	6	8	8	12	10	14	13	17	12													66	55	121	
DHIYAMIGILI MADHRASA	C	1	8	6	8	3	6	10	5	4	7	8	17	6	8	7	13	16	17	16	30												77	119	196		
GAADHIFUSHI MADHRASA	C							3	2	2	6	7	7	11	6	9	7	13	13	17	4													62	45	107	
HIRLANDHOO SCHOOL	C			9	17	10	19	21	7	10	10	7	19	12	15	13	8	14	14	23	13													119	122	241	
KAN'DOODHOO MADHRASA	C							12	5	9	8	8	8	6	10	8	9	10	9	11	8													64	57	121	
MADHRASATHUL JIHAD (VILUFUSHI)	C							17	22	20	16	12	15	21	18	19	25	25	46	35	42	50	46	37	20	15	7							251	257	508	
MADIFUSHI MADHRASA	C							6	8	9	13	6	9	15	17	21	19	21	18	32	12														110	96	206
OMADHOO MADHRASA	C	3	10					7	3	7	7	8	10	1	7	6	5	8	4	6	10													46	56	102	
VANDHOO MADHRASA	C	15	10					6	9	7	6	9	6	6	10	9	9	5	5	10	7													67	62	129	
VEYMANDOO MADHRASA	C							18	13	13	13	7	8	6	9	11	16	22	20	42	44	21	13												140	136	276
GURAIIDHOO PRE-SCHOOL	C	9	14	13	9	18	20																											40	43	83	
KIN'IDHOO PRE-SCHOOL	C	10	15	13	17	15	8																											38	40	78	
VILU THUTHHUKUDHINGE THAULEEMUTHEY CLASS (VILUFUSHI)	P	13	16	15	16	15	21																											43	53	96	
GADHAMAADHI PRE-SCHOOL (THIMARAFUSHI)	P	8	11	14	14	15	18																											37	43	80	
<b>TOTAL</b>		17	59	84	70	81	76	92	153	134	139	157	136	169	150	174	192	194	219	254	327	311	195	195	143	126	78	83					1937	2054	3991		

G - Government, C - Community, P - Private

ދިވެހިސަރުކާރުގެ ގެޒެޓްގައި އުސޫލުގެ ދަށުން

SCHOOLS' ENROLMENTS IN LAAMU ATOLL BY GRADE AND GENDER  
(MARCH 2002)

SCHOOL	Type	NURS		LKG		UKG		GR. 1		GR. 2		GR. 3		GR. 4		GR. 5		GR. 6		GR. 7		GR. 8		GR. 9		GR. 10		GR. 11		GR. 12		Special		SUBTOTAL		TOTAL			
		F	M	F	M	F	M	F	M	F	M	F	M	F	M	F	M	F	M	F	M	F	M	F	M	F	M	F	M	F	M	F	M						
L. ATHOLHU MADHRASA (MAABAIIDHOO)	G							7	11	16	16	10	12	11	14	14	30	22	33	38	35	26	25	26	25	19	15							189	216	405			
L. ATHOLHU THAULEEMEE MARUKAZU (FONADHOO)	G							17	21	21	25	26	26	18	36	25	24	28	31	63	101	91	88	52	53	34	43									375	448	823	
MAAVASHU SCHOOL	G							16	15	16	17	21	26	24	18	26	37	40	55	52	56	51	32	18	28	11	13									275	297	572	
QATAR AMEER SCHOOL (GAN)	G																	48	54	79	109	45	62	86	62	75	72									333	359	692	
DHANBIDHOO SCHOOL	C			7	6	8	13	15	8	6	8	14	9	14	7	9	5	13	22	13	10															99	88	187	
GAADHOO SCHOOL	C	3	4	4	4	3	3	8	5	3	4	4	2	5	5	1	4																			31	31	62	
THUNDÉE SCHOOL	C	5	1	13	6	13	10	16	7	10	21	13	19	18	15	16	16																			104	95	199	
HITHADHOO SCHOOL	C							12	10	13	19	15	12	8	13	12	25	8	8	4	12															72	99	171	
ISDHOO SCHOOL	C							21	12	17	11	20	22	20	30	22	22	20	23	18	23																138	143	281
ISDHOO-KALAIIDHOO SCHOOL	C							3	6	10	16	21	18	12	18	25	30	28	24	21	19																120	131	251
KALHAIIDHOO MADHRASA	C							5	7	5	10	6	7	6	22	6	13	10	15	5	11																43	85	128
KUNAHANDHOO MAKTHAB	C							10	8	5	10	13	8	10	9	18	20	20	11	10	11																86	77	163
MAAMENDHOO MAKTHAB	C			10	12	18	17	16	21	22	20	19	16	12	18	21	27	19	20	18	13	11	13														166	177	343
MATHIMARADHOO SCHOOL (GAN)	C	5	10	2	13	6	14	7	15	7	19	13	8	12	9	9	10																			61	98	159	
MUKURIMAGU MAKTHAB (GAN)	C					20	18	12	13	10	14	17	23	19	25	8	19																				86	112	198
MUNDOO MADHRASA	C			13	13	8	13	11	15	10	10	15	16	13	12	11	15	16	16	10	8																107	118	225
IRIS - THUTHUKUDHINGE THAULEEMUDHEY CLASS (FONADHOO)	P	6	9			6	6																													12	15	27	
<b>TOTAL</b>		17	19	24	49	54	82	94	176	174	171	220	227	224	202	251	223	297	272	312	331	408	224	220	182	168	139	143						2297	2589	4886			

G - Government, C - Community, P - Private





ދިވެހިސަރުކާރުގެ ގެޒެޓް ގައި ބަޔާންކޮށްފައިވާ ގޮތުގައި  
 SCHOOLS' ENROLMENTS IN GAAFU DHAALU ATOLL BY GRADE AND GENDER  
 (MARCH 2002)

SCHOOL	Type	NURS		LKG		UKG		GR. 1		GR. 2		GR. 3		GR. 4		GR. 5		GR. 6		GR. 7		GR. 8		GR. 9		GR. 10		GR. 11		GR. 12		Special		SUBTOTAL		TOTAL	
		F	M	F	M	F	M	F	M	F	M	F	M	F	M	F	M	F	M	F	M	F	M	F	M	F	M	F	M	F	M	F	M				
GDH. ATHOLHU MADHRASA (GADHDHOO)	G							33	27	36	29	33	30	25	34	37	29	47	60	51	60	32	22	20	36	11	13							325	340	665	
GDH. ATHOLHU THAULEEMEE MARUKAZU (THINADHOO)	G							53	75	72	79	77	59	84	70	117	114	118	119	141	169	96	88	125	92	100	77							983	942	1925	
FARES SCHOOL	C							9	3	9	10	12	9	18	14	13	12	3	14	4	8													68	70	138	
FIYOAREE SCHOOL	C							20	14	18	18	14	18	21	21	27	27	12	16	13	12													125	126	251	
HOADEDHOO SCHOOL	C			7	2	8	4	9	6	11	11	5	6	15	15	10	22	11	7	3	4													79	77	156	
JAMAALUDHEEN MADHRASA (VAADHOO)	C							16	15	13	9	18	20	17	14	26	28	14	12	24	11													128	109	237	
MAATHODAA MAKTHAB	C							16	12	15	12	15	13	14	14	19	12	15	17	15	18														109	98	207
MADAVELI SCHOOL	C							13	16	25	20	20	10	13	14	19	29	26	30	34	35	41	16												191	170	361
NADALLA SCHOOL	C							10	12	9	9	13	11	18	26	12	24	9	20	13	3														84	105	189
RATHAFANDHOO SCHOOL	C							10	20	15	9	9	9	15	16	12	22	11	7	10	3														82	86	168
AMEER IBRAHIM PRE-SCHOOL (THINADHOO)	P	11	17	14	16	24	18																											49	51	100	
RAULA PRE-SCHOOL (THINADHOO)	P	16	12	21	18	27	25																												64	55	119
M.M. PRE-SCHOOL (THINADHOO)	P	4	2	6	5	2	8																												12	15	27
NURSERY AND TUTORIAL SCHOOL (THINADHOO)	P	9	6	9	7	8	12																												26	25	51
SAPPHIRE-THUTHUKUDHINGE THAULEMDHEY CLASS (NADALLAA)	P	6	6	10	6	8	5																												24	17	41
ULOOMIYYA PRE-SCHOOL (THINADHOO)	P	17	23	16	18	17	12																												50	53	103
TODDLER'S PRE-SCHOOL (GADHDHOO)	P	8	3	11	7	13	12																												32	22	54
AL-RAYYAAN PRE-SCHOOL (VAADHOO)	P	5	6	6	2	11	12																												22	20	42
MAAIRA PRE-SCHOOL (FARES)	P	7	3	8	4	11	7																												26	14	40
ALIKILEGEFAANU MEMORIAL PRE-SCHOOL (FIYOAREE)	P	7	6	14	9	8	11																												29	26	55
ROASHANEE NURSERY CLASS (RATHAFANDHOO)	P					3	5																												3	5	8
MASAAFAA PRE SCHOOL (GADHDHOO)	P	9	2	16	6	12	13																												37	21	58
AMHA - THUTHUKUDHINGE THAULEEM DHEY CLASS (MADAVELI)	P	5	11	12	10	11	10																												28	31	59
MOHAMED IBRAHIM MEMORIAL PRE-SCHOOL (MADAVELI)	P	10	7	9	8	7	10																												26	25	51
MISBAAHUL HUDHAA SCHOOL (THINADHOO)	P															10	5	6	7	22	20	23	26	20	13									81	71	152	
<b>TOTAL</b>		25	114	104	159	118	170	164	189	200	223	206	216	185	240	238	292	319	276	307	314	330	191	146	168	154	131	103						2683	2574	5257	

G - Government , C - Community, P - Private

ދިވެހިސަރުކާރުގެ ގެޒެޓް ގައި ބަޔާންކުރި ގަވާއިދުގެ ތެރޭގައި  
 SCHOOLS' ENROLMENTS IN GNAVIYANI ATOLL BY GRADE AND GENDER  
 (MARCH 2002)

SCHOOL	Type	NURS		LKG		UKG		GR. 1		GR. 2		GR. 3		GR. 4		GR. 5		GR. 6		GR. 7		GR. 8		GR. 9		GR. 10		GR. 11		GR. 12		Special		SUBTOTAL		TOTAL	
		F	M	F	M	F	M	F	M	F	M	F	M	F	M	F	M	F	M	F	M	F	M	F	M	F	M	F	M	F	M	F	M				
GN. ATHOLHU THAULEEMEE MARUKAZU (FUAHMULAH)	G							27	47	57	59	59	77	80	69	75	74	81	116	134	129	94	77	150	110	84	55							841	813	1654	
FUAHMULAKU SCHOOL	G							21	22	37	36	27	26	28	30	36	39	56	57	54	30													259	240	499	
MADHRASATHUL SHEIKH MOHAMED JAMAALUDHDHEEN (FUAHMULAH)	G							24	23	45	42	29	42	21	39	29	39	55	95	50	63												253	343	596		
MADHRASATHUL JIHAADHU (FUAHMULAH)	P	22	26	41	39	27	61																									90	126	216			
URUVATHUL VUSQAA PRE-SCHOOL (FUAHMULAH)	P	4	3	5	3					3	5																					12	11	23			
MANHAJULHUDHAA PRE-SCHOOL (FUAHMULAH)	P	6	8	15	18	20	15					6	6																			47	47	94			
FOUNDATION SCHOOL (FUAHMULAH)	P	9	19	26	24	26	22															5	9									66	74	140			
ULAA PRE-SCHOOL (FUAHMULAH)	P	5	2	12	8	13	9																									30	19	49			
<b>TOTAL</b>		8	46	58	99	92	86	107	72	92	142	142	121	151	129	138	140	152	192	268	238	222	99	86	150	110	84	55					1598	1673	3271		

G - Government, C - Community, P - Private

ދިވެހިސަރުކާރުގެ ގެޒެޓްގައި ބަޔާންކޮށްފައިވާ ގޮތުން ސަރުކާރުގެ ބަޔާންކޮށްފައިވާ ގޮތުން

SCHOOLS' ENROLMENTS IN SEENU ATOLL BY GRADE AND GENDER  
(MARCH 2002)

SCHOOL	Type	NURS		LKG		UKG		GR. 1		GR. 2		GR. 3		GR. 4		GR. 5		GR. 6		GR. 7		GR. 8		GR. 9		GR. 10		GR. 11		GR. 12		Special		SUBTOTAL		TOTAL		
		F	M	F	M	F	M	F	M	F	M	F	M	F	M	F	M	F	M	F	M	F	M	F	M	F	M	F	M	F	M	F	M					
S. ATHOLHU MADHRASA (HULHUDHOO-MEEDHOO)	G																39	56	91	115	28	27	45	21	57	39								260	258	518		
S. ATHOLHU THAULEEMEE MARUKAZU (HITHADHOO)	G							77	77	76	76	68	74	76	77	83	85	95	93	96	101														571	583	1154	
FEYDHOO SCHOOL	G							27	25	32	56	41	41	33	56	42	51	49	71	97	64	51	37	57	27	28	34								457	462	919	
HITHADHOO SCHOOL	G							65	53	79	62	71	71	81	79	69	56	81	88	116	145															562	554	1116
IRUSHAADHIYAA SCHOOL (MARADHOO-FEYDHOO)	G													31	37	23	41	50	38	88	111	34	24	29	31	27	21							282	303	585		
MUHBIBUDEEN SCHOOL (HITHADHOO)	G																			102	105	213	164	167	121	175	119	43	39					700	548	1248		
SHAMSUDHDEEN SCHOOL (MEEDHOO)	G							20	28	24	21	23	26	21	32	27	25																			115	132	247
HULHUDHOO SCHOOL	G							16	21	13	17	17	26	16	10	18	24																			80	98	178
AL-MADHRASATHUL ISLAAMIYYA (HITHADHOO)	G							7	7	4	8	4	13	7	8	1	13	3	8	7	12	6	4	16	12	10	6								65	91	156	
MARADHOO SCHOOL	C	19	18	18	25	19	25	34	26	37	29	34	45																						161	168	329	
MARADOO-FEYDHOO SCHOOL	C			10	10	14	15	9	20	15	18	14	12	13	19	19	16																		94	110	204	
ASRIYAA-THUTHUKUDHINGE THAULEEMDHEY CLASS (MEEDHOO)	P			12	6	4	3																												16	9	25	
MAKTHABUL HIDHAAYAA (HITHADHOO)	P	6	4																																6	4	10	
MEDHUVALU SCHOOL (HITHADHOO)	P	39	39	51	61	60	71																												150	171	321	
NOORAALEE SCHOOL (HITHADHOO)	P	27	14	33	33	45	33	14	15	13	11	9	12	9	16	13	14	13	14	14	18														190	180	370	
ADDU COMPREHENSIVE SCHOOL (HITHADHOO)	P																					24	41	24	33	40	16								88	90	178	
SAEEDIYA PRE-SCHOOL (HITHADHOO)	P	25	27	27	31	33	34																												85	92	177	
SHAREEFEE PRE-SCHOOL (MEEDHOO)	P	7	5	15	15	25	20																												47	40	87	
NASRIYYA PRE-SCHOOL (HULHUDHOO)	P	8	8	15	25	22	24																												45	57	102	
KUDHIMAA PRE-SCHOOL (FEYDHOO)	P	24	31	22	24	26	30																												72	85	157	
SHEIKH HUSSAIN RAHA PRE-SCHOOL (HITHADHOO)	P	10	6		3	1	5																												11	14	25	
TOTAL		21	165	152	203	233	249	260	269	272	293	298	281	320	287	334	295	325	330	368	611	671	356	297	338	245	337	235	43	39				4057	4049	8106		

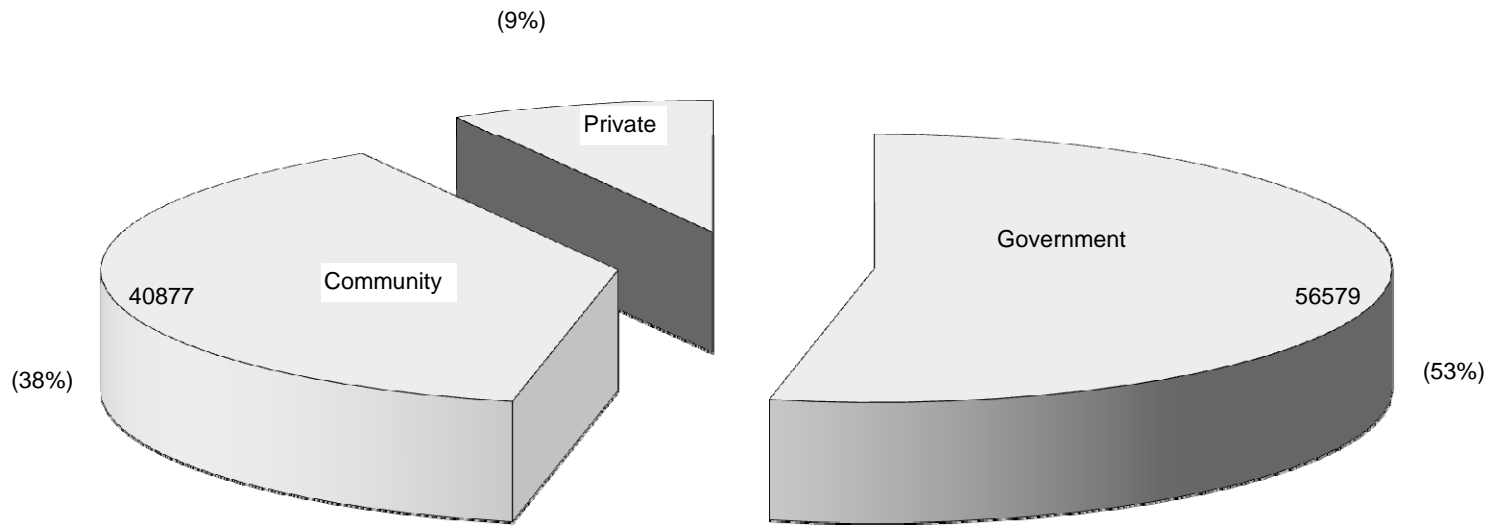
G - Government, C - Community, P - Private

ދިވެހިރާއްޖޭގެ ސަރުކާރުގެ ގެޒެޓް ގައި ބަޔާންކުރި ގޮތުގައި

NUMBER OF SCHOOLS AND ENROLMENTS OF MALE' AND ATOLLS BY PROVISION  
(MARCH 2002)

Name of Atoll	GOVERNMENT				COMMUNITY				PRIVATE				TOTAL			
	Schools	Female	Male	Total	Schools	Female	Male	Total	Schools	Female	Male	Total	Schools	Female	Male	Total
Haa Alifu	3	1126	1194	2320	17	1714	1817	3531	5	156	163	319	25	2996	3174	6170
Haa Dhaalu	4	1833	1853	3686	14	1471	1593	3064	2	75	92	167	20	3379	3538	6917
Shaviyani	3	903	950	1853	13	1129	1227	2356	2	156	148	304	18	2188	2325	4513
Noonu	3	987	1011	1998	13	1051	1046	2097	4	111	107	218	20	2149	2164	4313
Raa	3	1030	1078	2108	13	1967	2096	4063	2	64	81	145	18	3061	3255	6316
Baa	3	1009	1206	2215	11	665	750	1415	3	174	205	379	17	1848	2161	4009
Lhaviyani	4	1418	1532	2950	4	212	223	435	3	70	93	163	11	1700	1848	3548
Kaafu	3	390	484	874	7	971	1116	2087	2	46	43	89	12	1407	1643	3050
Alifu Alifu	2	241	281	522	6	445	482	927	7	81	89	170	15	767	852	1619
Alifu Dhaalu	2	699	796	1495	10	587	700	1287					12	1286	1496	2782
Vaavu	2	134	175	309	3	154	164	318					5	288	339	627
Meemu	2	350	319	669	7	585	622	1207	1	20	15	35	10	955	956	1911
Faafu	2	459	429	888	3	281	337	618					5	740	766	1506
Dhaalu	2	386	450	836	7	511	550	1061					9	897	1000	1897
Thaa	3	777	870	1647	12	1080	1088	2168	2	80	96	176	17	1937	2054	3991
Laamu	4	1172	1320	2492	12	1113	1254	2367	1	12	15	27	17	2297	2589	4886
Gaafu Alifu	2	660	752	1412	8	804	802	1606	5	135	135	270	15	1599	1689	3288
Gaafu Dhaalu	2	1308	1282	2590	8	866	841	1707	15	509	451	960	25	2683	2574	5257
Gnaviyani	3	1353	1396	2749					5	245	277	522	8	1598	1673	3271
Seenu	9	3092	3029	6121	2	255	278	533	10	710	742	1452	21	4057	4049	8106
Male'	13	8261	8584	16845	4	4292	3738	8030	5	1923	1445	3368	22	14476	13767	28243
<b>TOTAL</b>	<b>74</b>	<b>27588</b>	<b>28991</b>	<b>56579</b>	<b>174</b>	<b>20153</b>	<b>20724</b>	<b>40877</b>	<b>74</b>	<b>4567</b>	<b>4197</b>	<b>8764</b>	<b>322</b>	<b>52308</b>	<b>53912</b>	<b>106220</b>

සමස්ත පාලන කොටස, පුද්ගලික පාලන කොටස, පුද්ගලික පාලන කොටස  
DISTRIBUTION OF ENROLMENT BY TYPE OF SCHOOLS  
(MARCH 2002)

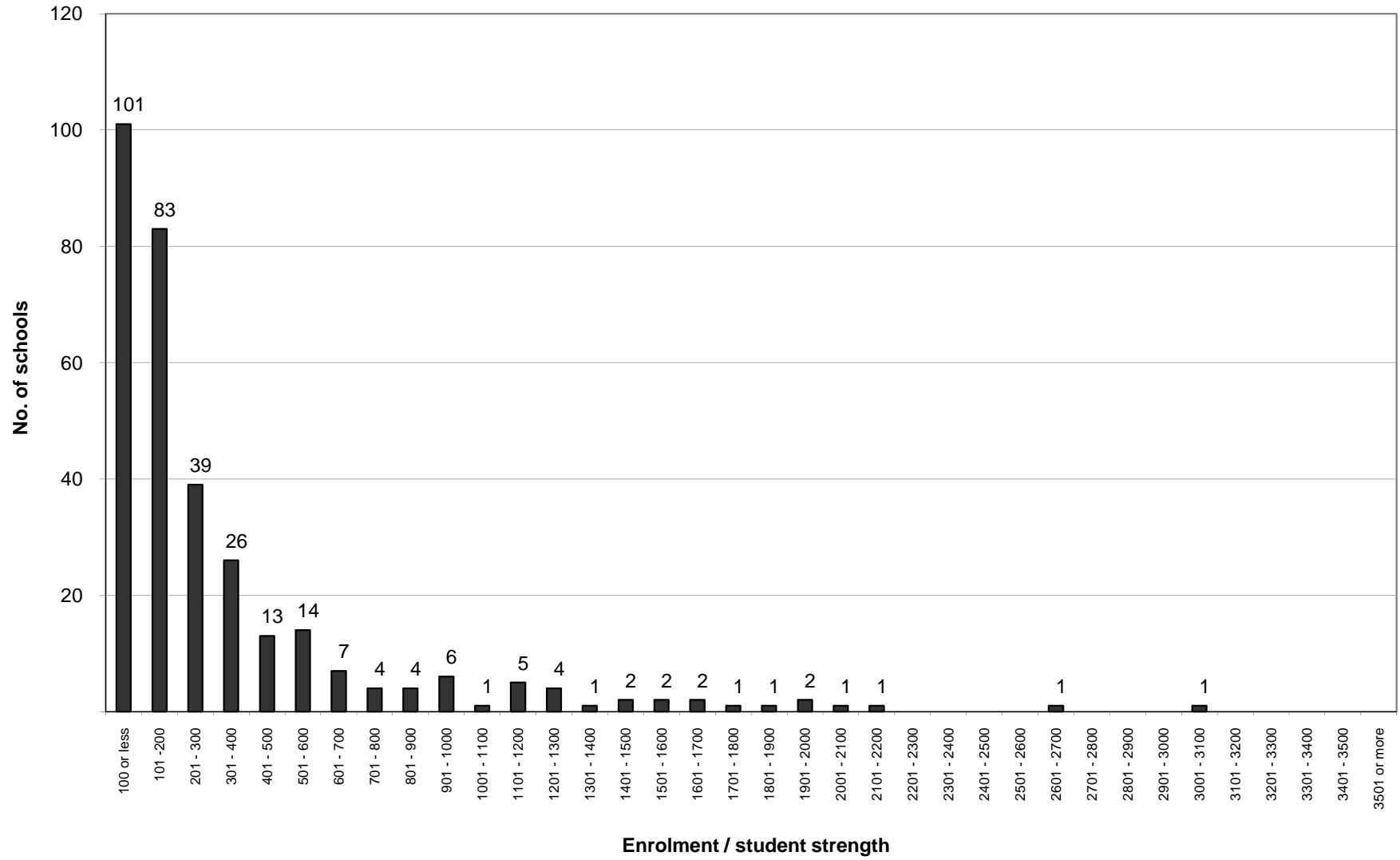


የኢትዮጵያ ጥቅም ስራ ሚኒስቴር  
የትምህርት ሚኒስቴር

FREQUENCY DISTRIBUTION OF SCHOOLS BY SIZE OF ENROLMENT  
(MARCH 2002)

Enrolment Category	No. of schools	Percentage	Cumulative total	Cumulative Percentage
Schools with 100 or less students	101	31.37	101	31.37
Schools with 101 - 200 students	83	25.78	184	57.14
Schools with 201 - 300 students	39	12.11	223	69.25
Schools with 301 - 400 students	26	8.07	249	77.33
Schools with 401 - 500 students	13	4.04	262	81.37
Schools with 501 - 600 students	14	4.35	276	85.71
Schools with 601 - 700 students	7	2.17	283	87.89
Schools with 701 - 800 students	4	1.24	287	89.13
Schools with 801 - 900 students	4	1.24	291	90.37
Schools with 901 - 1000 students	6	1.86	297	92.24
Schools with 1001 - 1100 students	1	0.31	298	92.55
Schools with 1101 - 1200 students	5	1.55	303	94.10
Schools with 1201 - 1300 students	4	1.24	307	95.34
Schools with 1301 - 1400 students	1	0.31	308	95.65
Schools with 1401 - 1500 students	2	0.62	310	96.27
Schools with 1501 - 1600 students	2	0.62	312	96.89
Schools with 1601 - 1700 students	2	0.62	314	97.52
Schools with 1701 - 1800 students	1	0.31	315	97.83
Schools with 1801 - 1900 students	1	0.31	316	98.14
Schools with 1901 - 2000 students	2	0.62	318	98.76
Schools with 2001 - 2100 students	1	0.31	319	99.07
Schools with 2101 - 2200 students	1	0.31	320	99.38
Schools with 2201 - 2300 students	0	0.00	320	99.38
Schools with 2301 - 2400 students	0	0.00	320	99.38
Schools with 2401 - 2500 students	0	0.00	320	99.38
Schools with 2501 - 2600 students	0	0.00	320	99.38
Schools with 2601 - 2700 students	1	0.31	321	99.69
Schools with 2701 - 2800 students	0	0.00	321	99.69
Schools with 2801 - 2900 students	0	0.00	321	99.69
Schools with 2901 - 3000 students	0	0.00	321	99.69
Schools with 3001 - 3100 students	1	0.31	322	100.00
Schools with 3101 - 3200 students	0	0.00	322	100.00
Schools with 3201 - 3300 students	0	0.00	322	100.00
Schools with 3301 - 3400 students	0	0.00	322	100.00
Schools with 3401 - 3500 students	0	0.00	322	100.00
Schools with 3501 or more students	0	0.00	322	100.00
<b>TOTAL</b>	<b>322</b>	<b>100.00</b>		

NUMBER OF SCHOOLS BY SIZE OF ENROLMENT  
(MARCH 2002)





ދިވެހިސަރުކާރުގެ ގެޒެޓް (2002ވަނަ އަހަރުގެ މާރޅު ខަނުގެ ތާރީޚު)

NUMBER OF GOVERNMENT SCHOOLS AND THEIR ENROLMENTS BY MALE' AND ATOLLS AND LEVELS  
(MARCH 2002)

GOVERNMENT SCHOOLS

Atoll	Pre-Primary Enrolment				Primary Enrolment				Lower Secondary Enrolment				Higher Secondary Enrolment			
	No.	Female	Male	Total	No.	Female	Male	Total	No.	Female	Male	Total	No.	Female	Male	Total
Haa Alifu					3	779	870	1649	2	347	324	671				
Haa Dhaalu					4	1367	1499	2866	2	466	354	820				
Shaviyani					3	569	609	1178	3	334	341	675				
Noonu					3	612	690	1302	3	375	321	696				
Raa					3	777	829	1606	3	253	249	502				
Baa					3	660	788	1448	3	345	401	746	1	4	17	21
Lhaviyani					4	1068	1203	2271	3	350	329	679				
Kaafu					3	293	396	689	2	97	88	185				
Alifu Alifu					2	157	205	362	2	84	76	160				
Alifu Dhaalu					2	476	550	1026	2	223	246	469				
Vaavu					2	89	120	209	2	45	55	100				
Meemu					2	233	222	455	2	117	97	214				
Faafu					2	326	302	628	2	133	127	260				
Dhaalu					2	249	315	564	2	137	135	272				
Thaa					3	484	552	1036	3	293	318	611				
Laamu					4	638	802	1440	4	534	518	1052				
Gaafu Alifu					2	425	517	942	2	235	235	470				
Gaafu Dhaalu					2	924	954	1878	2	384	328	712				
Gnaviyani					3	1025	1154	2179	1	328	242	570				
Seenu					7	2106	2303	4409	5	943	687	1630	1	43	39	82
Male'					9	5091	5505	10596	4	2689	2474	5163	2	457	571	1028
<b>TOTAL</b>					<b>68</b>	<b>18348</b>	<b>20385</b>	<b>38733</b>	<b>54</b>	<b>8712</b>	<b>7945</b>	<b>16657</b>	<b>4</b>	<b>504</b>	<b>627</b>	<b>1131</b>

(2002 මාර්ଚ්) ජනපද පාසල සංඛ්‍යාව සහ ඒවායේ සිසුන්ගේ සංඛ්‍යාව මගින් වර්ගීකරණය කළ ප්‍රදේශීය පාසල සංඛ්‍යාව සහ ඒවායේ සිසුන්ගේ සංඛ්‍යාව

NUMBER OF COMMUNITY SCHOOLS AND THEIR ENROLMENTS BY MALE' AND ATOLLS AND LEVELS  
(MARCH 2002)

**COMMUNITY SCHOOLS**

Atoll	Pre-Primary Enrolment				Primary Enrolment				Lower Secondary Enrolment				Higher Secondary Enrolment			
	No.	Female	Male	Total	No.	Female	Male	Total	No.	Female	Male	Total	No.	Female	Male	Total
Haa Alifu	11	249	270	519	13	1319	1392	2711	2	146	155	301				
Haa Dhaalu	10	346	366	712	13	1125	1227	2352								
Shaviyani	2	47	57	104	12	932	1014	1946	3	150	156	306				
Noonu	2	72	64	136	11	967	964	1931	1	12	18	30				
Raa	5	164	165	329	12	1476	1611	3087	5	327	320	647				
Baa	7	117	109	226	10	520	612	1132	2	28	29	57				
Lhaviyani	3	160	165	325	1	52	58	110								
Kaafu	6	153	141	294	7	740	900	1640	4	78	75	153				
Alifu Alifu	1	16	18	34	6	429	464	893								
Alifu Dhaalu	6	141	183	324	8	408	476	884	3	38	41	79				
Vaavu	3	29	25	54	3	106	112	218	1	19	27	46				
Meemu	4	41	48	89	7	415	427	842	2	129	147	276				
Faafu	2	24	20	44	3	238	286	524	1	19	31	50				
Dhaalu	2	61	50	111	6	429	479	908	1	21	21	42				
Thaa	6	125	161	286	10	832	841	1673	2	123	86	209				
Laamu	7	138	157	295	12	964	1084	2048	1	11	13	24				
Gaafu Alifu	1	21	13	34	8	709	733	1442	1	74	56	130				
Gaafu Dhaalu	1	15	6	21	8	810	819	1629	1	41	16	57				
Gnaviyani																
Seenu	2	80	93	173	2	175	185	360								
Male'	4	1932	1948	3880	4	1193	880	2073	4	1167	910	2077				
<b>TOTAL</b>	<b>85</b>	<b>3931</b>	<b>4059</b>	<b>7990</b>	<b>156</b>	<b>13839</b>	<b>14564</b>	<b>28403</b>	<b>34</b>	<b>2383</b>	<b>2101</b>	<b>4484</b>				

ދިވެހިސަރުކާރުގެ ގެޒެޓް (މިނިސްޓްރީ އޮފް ޕްރައިވޭޓް އިންޑަސްޓްރީ އަންޑް ޕްރޮޓެކްޝަން)

NUMBER OF PRIVATE SCHOOLS AND ENROLMENTS BY MALE' AND ATOLLS AND LEVELS  
(MARCH 2001)

PRIVATE SCHOOLS

Atoll	Pre-Primary Enrolment				Primary Enrolment				Lower Secondary Enrolment				Higher Secondary Enrolment			
	No.	Female	Male	Total	No.	Female	Male	Total	No.	Female	Male	Total	No.	Female	Male	Total
Haa Alifu	5	156	163	319												
Haa Dhaalu	3	75	92	167												
Shaviyani	2	36	37	73	1	77	77	154	1	43	34	77				
Noonu	4	111	107	218												
Raa	2	64	81	145												
Baa	2	107	127	234		16	17	33	1	51	61	112				
Lhaviyani	3	70	93	163												
Kaafu	2	46	43	89												
Alifu Alifu	7	81	89	170												
Alifu Dhaalu																
Vaavu																
Meemu	1	20	15	35												
Faafu																
Dhaalu																
Thaa	2	80	96	176												
Laamu	1	12	15	27												
Gaafu Alifu	5	135	135	270												
Gaafu Dhaalu	14	428	380	808		16	12	28	1	65	59	124				
Gnaviyani	5	231	257	488	1	9	11	20	1	5	9	14				
Seenu	8	537	552	1089	1	85	100	185	1	88	90	178				
Male'	3	203	222	425	3	411	275	686	3	1309	948	2257				
<b>TOTAL</b>	<b>69</b>	<b>2392</b>	<b>2504</b>	<b>4896</b>	<b>6</b>	<b>614</b>	<b>492</b>	<b>1106</b>	<b>8</b>	<b>1561</b>	<b>1201</b>	<b>2762</b>				

(අධ්‍යාපන සේවා දෙපාර්තමේන්තුව විසින් සකස් කළ) ශ්‍රී ලංකා ප්‍රජාතාන්ත්‍රික සමාජවාදී ජනරජයේ අධ්‍යාපන සේවා දෙපාර්තමේන්තුව

NUMBER OF SCHOOLS AND ENROLMENT BY MALE' AND ATOLLS AND LEVELS

(MARCH 2002)

**GOVERNMENT, COMMUNITY AND PRIVATE SCHOOLS**

Atoll	Pre-Primary Enrolment				Primary Enrolment				Lower Secondary Enrolment				Higher Secondary Enrolment			
	No.	Female	Male	Total	No.	Female	Male	Total	No.	Female	Male	Total	No.	Female	Male	Total
Haa Alifu	16	405	433	838	16	2098	2262	4360	4	493	479	972				
Haa Dhaalu	13	421	458	879	17	2492	2726	5218	2	466	354	820				
Shaviyani	4	83	94	177	16	1578	1700	3278	7	527	531	1058				
Noonu	6	183	171	354	14	1579	1654	3233	4	387	339	726				
Raa	7	228	246	474	15	2253	2440	4693	8	580	569	1149				
Baa	9	224	236	460	13	1196	1417	2613	6	424	491	915	1	4	17	21
Lhaviyani	6	230	258	488	5	1120	1261	2381	3	350	329	679				
Kaafu	8	199	184	383	10	1033	1296	2329	6	175	163	338				
Alifu Alifu	8	97	107	204	8	586	669	1255	2	84	76	160				
Alifu Dhaalu	6	141	183	324	10	884	1026	1910	5	261	287	548				
Vaavu	3	29	25	54	5	195	232	427	3	64	82	146				
Meemu	5	61	63	124	9	648	649	1297	4	246	244	490				
Faafu	2	24	20	44	5	564	588	1152	3	152	158	310				
Dhaalu	2	61	50	111	8	678	794	1472	3	158	156	314				
Thaa	8	205	257	462	13	1316	1393	2709	5	416	404	820				
Laamu	8	150	172	322	16	1602	1886	3488	5	545	531	1076				
Gaafu Alifu	6	156	148	304	10	1134	1250	2384	3	309	291	600				
Gaafu Dhaalu	15	443	386	829	10	1750	1785	3535	4	490	403	893				
Gnaviyani	5	231	257	488	4	1034	1165	2199	2	333	251	584				
Seenu	10	617	645	1262	10	2366	2588	4954	6	1031	777	1808	1	43	39	82
Male'	7	2135	2170	4305	16	6695	6660	13355	11	5165	4332	9497	2	457	571	1028
<b>TOTAL</b>	<b>154</b>	<b>6323</b>	<b>6563</b>	<b>12886</b>	<b>230</b>	<b>32801</b>	<b>35441</b>	<b>68242</b>	<b>96</b>	<b>12656</b>	<b>11247</b>	<b>23903</b>	<b>4</b>	<b>504</b>	<b>627</b>	<b>1131</b>

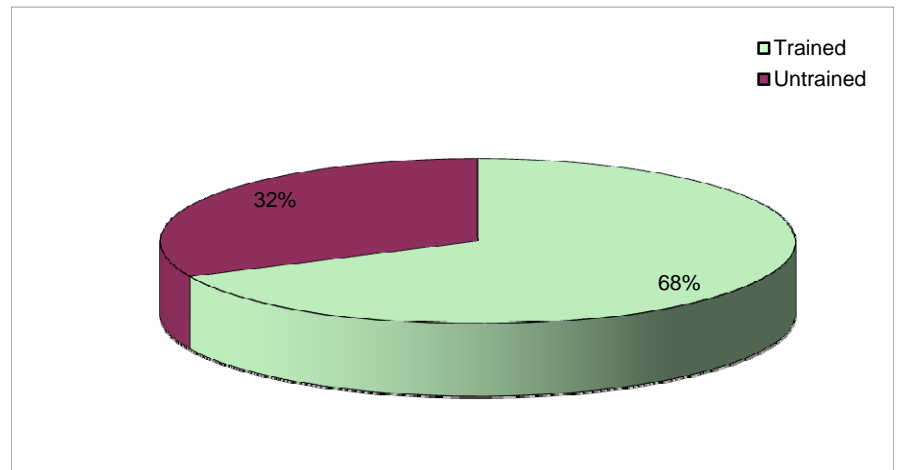
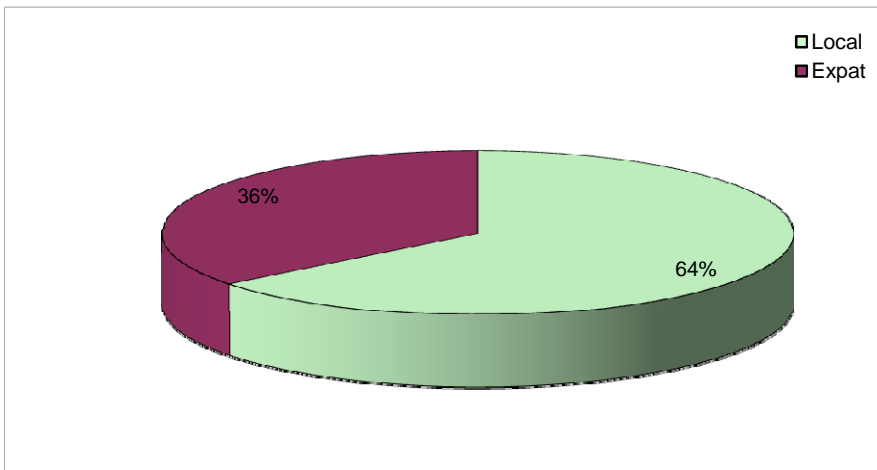
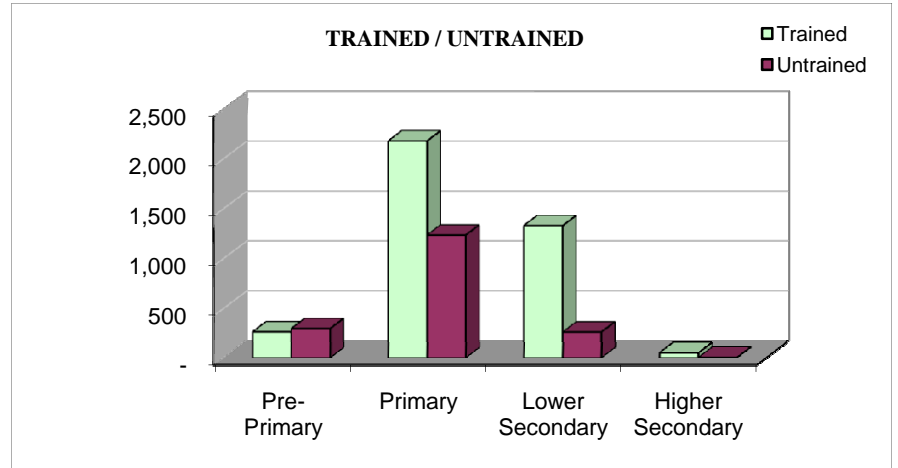
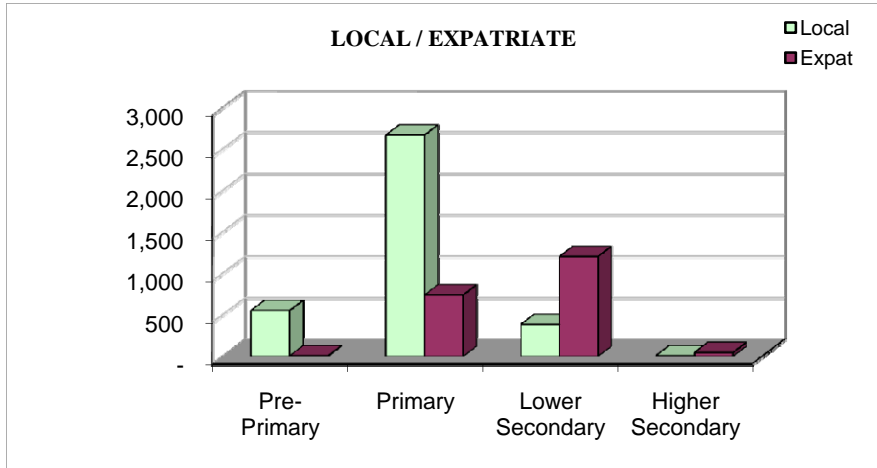
ދިވެހިސަރުކާރުގެ ގެޒެޓް ގައި ބަޔާންކޮށްފައިވާ ގޮތުން 2002 ވަނަ އަހަރުގެ މާރޗް ގައި ދިވެހިސަރުކާރުގެ ގެޒެޓް ގައި ބަޔާންކޮށްފައިވާ ގޮތުން

TEACHERS SERVING AT DIFFERENT LEVELS, BY JOB CATEGORIES  
(MARCH 2002)

	Permanant																Temporary				Total				Local & Expat
	Trained								Untrained								Local		Expat		Local		Expat		
	Graduate				Non-Graduate				Graduate				Non-Graduate				Local	Expat	Local	Expat	Local	Expat			
	Local		Expat		Local		Expat		Local		Expat		Local		Expat		F	M	F	M	F	M	F	M	
	F	M	F	M	F	M	F	M	F	M	F	M	F	M	F	M	F	M	F	M	F	M	F	M	
<b>Republic</b>																									
Pre-Primary	-	-	-	2	244	15	2	1	-	-	-	-	96	5	-	-	178	16	1	1	518	36	3	4	561
Primary (Grades 1 - 7)	1	14	208	224	####	479	111	94	-	4	29	37	136	100	3	6	589	300	14	16	####	897	365	377	3,411
Lower Secondary School (Grades 8 - 10)	23	30	269	595	126	129	37	119	1	14	37	108	4	16	-	6	5	37	7	27	159	226	350	855	1,590
Higher Secondary Schools (Grades 11 - 12)	1	4	16	27	-	2	-	-	-	-	-	4	-	-	-	-	-	-	-	-	1	6	16	31	54
Subtotals by Sex	25	48	493	848	####	625	150	214	1	18	66	149	236	121	3	12	772	353	22	44	####	####	734	####	5,616
<b>Male'</b>																									
Pre-Primary	-	-	-	-	100	-	-	-	-	-	-	-	37	-	-	-	8	-	-	-	145	-	-	-	145
Primary (Grades 1 - 7)	1	10	39	22	338	69	70	26	-	-	8	7	49	15	1	1	24	14	9	7	412	108	127	63	710
Lower Secondary School (Grades 8 - 10)	9	14	96	184	54	53	24	54	1	4	4	12	3	5	-	-	2	28	7	22	69	104	131	272	576
Higher Secondary Schools (Grades 11 - 12)	1	4	15	25	-	2	-	-	-	-	-	-	-	-	-	-	-	-	-	-	1	6	15	25	47
Subtotals by Sex	11	28	150	231	492	124	94	80	1	4	12	19	89	20	1	1	34	42	16	29	627	218	273	360	1,478
<b>Atolls</b>																									
Pre-Primary	-	-	-	2	144	15	2	1	-	-	-	-	59	5	-	-	170	16	1	1	373	36	3	4	416
Primary (Grades 1 - 7)	-	4	169	202	708	410	41	68	-	4	21	30	87	85	2	5	565	286	5	9	####	789	238	314	2,701
Lower Secondary School (Grades 8 - 10)	14	16	173	411	72	76	13	65	-	10	33	96	1	11	-	6	3	9	-	5	90	122	219	583	1,014
Higher Secondary Schools (Grades 11 - 12)	-	-	1	2	-	-	-	-	-	-	-	4	-	-	-	-	-	-	-	-	-	-	1	6	7
Subtotals by Sex	14	20	343	617	924	501	56	134	-	14	54	130	147	101	2	11	738	311	6	15	####	947	461	907	4,138
Subtotals by Local/Expat.	73		1341		2041		364		19		215		357		15		1125		66		3615		2001		
Subtotals by Graduate/Non-graduate	1414				2405				234				372												
Subtotals by Trained/Untrained	3819								606																
Subtotals by Permanent/Temporary	4425																1191								
Grand Total																							5,616		

\* This table does not include supervisors, assistant headmasters, headmasters, assistant principals and principals who may teach in addition to their administrative duties. Schools overlap in levels. Overlapping teachers have been enumerated in the level the teacher takes most periods.

ڊپارٽمينٽ آف هائي اسڪول ٽيچرن جي ڊيپارٽمينٽ ۾ ڊپارٽمينٽ جي ٽيچرن جي انگ  
 TEACHERS SERVING AT DIFFERENT LEVELS  
 (MARCH 2002)

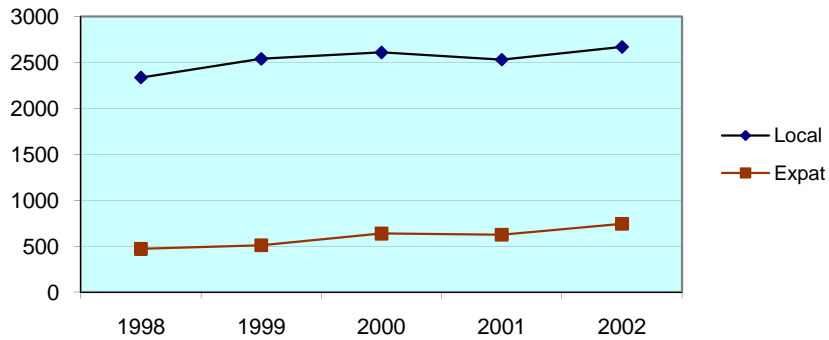


تعداد معلمات و معلمي التعليم الأساسي والثانوي

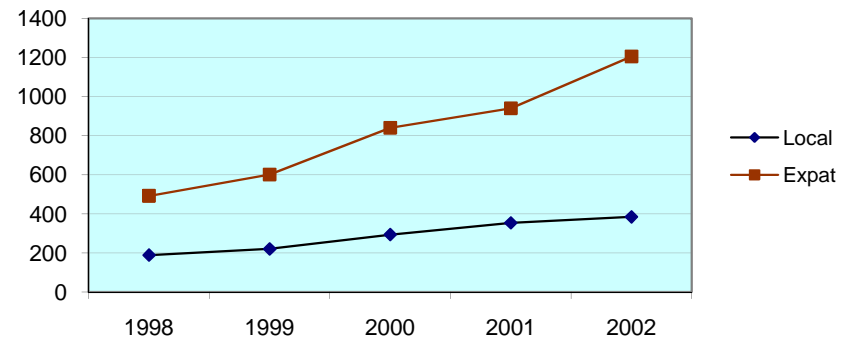
TEACHERS' TREND (LOCAL AND EXPATRIATE)

1998 - 2002

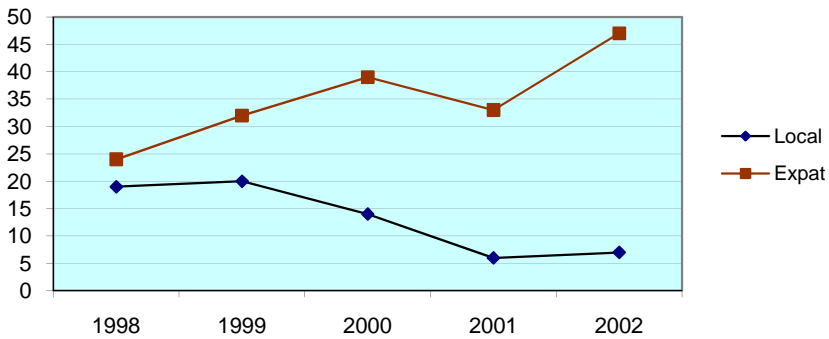
Primary



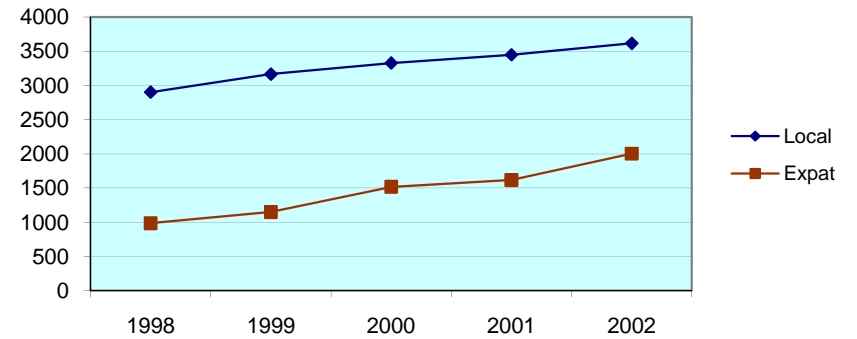
Lower Secondary



Higher Secondary



All Levels



ދިވެހިސަރުކާރުގެ ގެޒެޓް ގައި ބަޔާންކުރި ގޮތުގައި 2002 ވަނަ އަހަރުގެ މާރޗް ގައި ދިވެހިރާއްޖޭގެ ފަތުރުވެރިންނަށް ދިނުމަށް ފޯމުލުކުރި ފަތުރުވެރިންގެ ތަޢާރުތަކާ ގުޅިގެން

TEACHERS SERVING IN MALE' AND ATOLLS BY JOB CATEGORIES  
(MARCH 2002)

Locality	Permanent																Temporary				Total					
	Trained								Untrained																	
	Graduate				Non-Graduate				Graduate				Non-Graduate													
	Local		Expat		Local		Expat		Local		Expat		Local		Expat		Local		Expat		Local & Expat					
F	M	F	M	F	M	F	M	F	M	F	M	F	M	F	M	F	M	F	M	F	M	F	M	F	M	Expat
<b>Republic</b>	25	48	493	848	1,416	625	150	214	1	18	66	149	236	121	3	12	772	353	22	44	2,450	1,165	734	1,267	5,616	
<b>Male'</b>	11	28	150	231	492	124	94	80	1	4	12	19	89	20	1	1	34	42	16	29	627	218	273	360	1,478	
<b>Atolls</b>	14	20	343	617	924	501	56	134	-	14	54	130	147	101	2	11	738	311	6	15	1,823	947	461	907	4,138	
Haa Alifu	-	1	31	20	68	40	5	24	-	-	5	5	10	9	-	1	72	22	-	3	150	72	41	53	316	
Haa Dhaalu	3	6	37	50	72	30	2	4	-	-	3	3	5	3	2	-	78	29	-	-	158	68	44	57	327	
Shaviyani	-	-	18	63	34	55	-	4	-	1	3	5	4	11	-	-	37	24	-	-	75	91	21	72	259	
Noonu	-	-	9	31	56	32	-	4	-	-	5	20	5	6	-	1	23	14	-	-	84	52	14	56	206	
Raa	-	1	15	53	43	43	5	20	-	1	5	17	15	13	-	-	72	45	-	-	130	103	25	90	348	
Baa	1	4	20	36	72	39	9	16	-	2	-	1	2	8	-	-	18	5	-	-	93	58	29	53	233	
Lhaviyani	-	-	20	40	53	18	1	4	-	-	-	-	9	4	-	-	40	6	-	-	102	28	21	44	195	
Kaafu	-	-	15	17	26	32	7	7	-	-	-	2	10	5	-	-	21	14	-	-	57	51	22	26	156	
Alifu Alifu	-	-	5	8	16	14	1	2	-	-	4	5	4	4	-	-	35	6	3	-	55	24	13	15	107	
Alifu Dhaalu	3	-	11	17	35	9	1	6	-	1	2	8	3	3	-	-	45	8	-	4	86	21	14	35	156	
Vaavu	-	-	2	2	6	2	2	7	-	-	-	-	1	-	-	-	9	4	-	-	16	6	4	9	35	
Meemu	-	-	11	20	26	16	1	7	-	-	-	-	3	4	-	5	17	10	-	1	46	30	12	33	121	
Faafu	-	-	13	16	11	17	-	1	-	-	2	4	3	3	-	-	9	5	2	2	23	25	17	23	88	
Dhaalu	-	-	6	32	24	19	1	4	-	2	-	-	1	-	-	2	14	13	1	1	39	34	8	39	120	
Thaa	-	-	7	46	44	15	1	5	-	1	4	6	4	1	-	-	46	26	-	2	94	43	12	59	208	
Laamu	-	-	22	34	32	26	10	8	-	-	4	5	5	7	-	1	43	32	-	1	80	65	36	49	230	
Gaafu Alifu	-	-	16	23	44	32	1	3	-	-	2	10	5	3	-	1	21	12	-	1	70	47	19	38	174	
Gaafu Dhaalu	1	-	30	45	72	35	2	3	-	-	-	2	20	7	-	-	53	17	-	-	146	59	32	50	287	
Gnaviyani	2	3	10	18	81	16	-	-	-	-	5	8	2	4	-	-	18	2	-	-	103	25	15	26	169	
Seenu	4	5	45	46	109	11	7	5	-	6	10	29	36	6	-	-	67	17	-	-	216	45	62	80	403	

*This table does not include supervisors, assistant headmasters, headmasters, assistant principals and principals who may teach in addition to their administrative duties.  
This table includes pre-primary teachers*



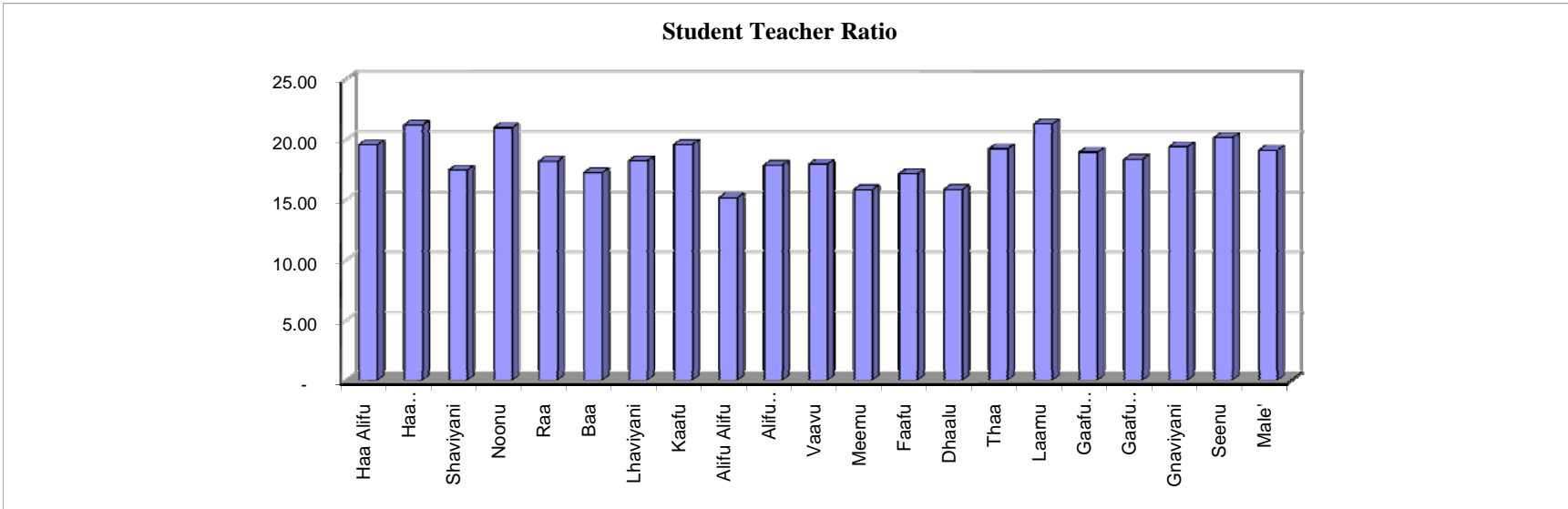
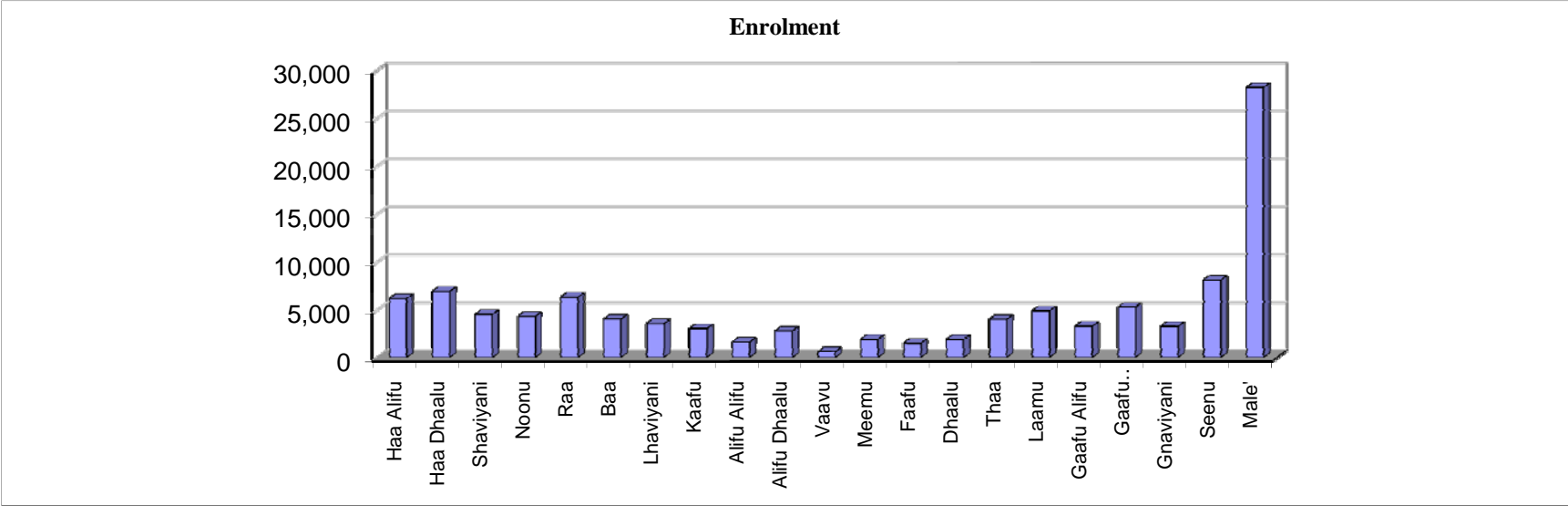
ފުލުވިބަހުގެ ސަރުކާރުގެ ފަރާތުން ދިވެހިސަރުކާރުގެ ގެޒެޓްގައި ބަޔާންކޮށްފައިވާ ގޮތުން  
 STUDENT TEACHER RATIO OF MALE' AND ATOLLS BY LEVELS  
 (MARCH 2002)

Locality	Pre-Primary			Primary			Lower Secondary			Higher Secondary			Total		
	St. Enrol	Tr. Enrol	STR	St. Enrol	Tr. Enrol	STR	St. Enrol	Tr. Enrol	STR	St. Enrol	Tr. Enrol	STR	St. Enrol	Tr. Enrol	STR
<b>Republic</b>	<b>12,886</b>	<b>561</b>	<b>22.97</b>	<b>68,242</b>	<b>3,411</b>	<b>20.01</b>	<b>23,903</b>	<b>1,590</b>	<b>15.03</b>	<b>1,131</b>	<b>54</b>	<b>20.94</b>	<b>106,162</b>	<b>5616</b>	<b>18.90</b>
<b>Male'</b>	<b>4,305</b>	<b>145</b>	<b>29.69</b>	<b>13,355</b>	<b>710</b>	<b>18.81</b>	<b>9,497</b>	<b>576</b>	<b>16.49</b>	<b>1,028</b>	<b>47</b>	<b>21.87</b>	<b>28,185</b>	<b>1,478</b>	<b>19.07</b>
<b>Atolls</b>	<b>8,581</b>	<b>416</b>	<b>20.63</b>	<b>54,887</b>	<b>2,701</b>	<b>20.32</b>	<b>14,406</b>	<b>1,014</b>	<b>14.21</b>	<b>103</b>	<b>7</b>	<b>14.71</b>	<b>77,977</b>	<b>4138</b>	<b>18.84</b>
Haa Alifu	838	44	19.05	4,360	214	20.37	972	58	16.76	-	-	-	6,170	316	19.53
Haa Dhaalu	879	28	31.39	5,218	245	21.30	820	54	15.19	-	-	-	6,917	327	21.15
Shaviyani	177	7	25.29	3,278	172	19.06	1,058	80	13.23	-	-	-	4,513	259	17.42
Noonu	354	12	29.50	3,233	151	21.41	726	43	16.88	-	-	-	4,313	206	20.94
Raa	474	19	24.95	4,693	255	18.40	1,149	74	15.53	-	-	-	6,316	348	18.15
Baa	460	18	25.56	2,613	143	18.27	915	72	12.71	21	-	-	4,009	233	17.21
Lhaviyani	488	32	15.25	2,381	120	19.84	679	43	15.79	-	-	-	3,548	195	18.19
Kaafu	383	14	27.36	2,329	107	21.77	338	35	9.66	-	-	-	3,050	156	19.55
Alifu Alifu	204	21	9.71	1,255	74	16.96	160	12	13.33	-	-	-	1,619	107	15.13
Alifu Dhaalu	324	17	19.06	1,910	106	18.02	548	33	16.61	-	-	-	2,782	156	17.83
Vaavu	54	1	54.00	427	27	15.81	146	7	20.86	-	-	-	627	35	17.91
Meemu	124	10	12.40	1,297	65	19.95	490	46	10.65	-	-	-	1,911	121	15.79
Faafu	44	3	14.67	1,152	57	20.21	310	28	11.07	-	-	-	1,506	88	17.11
Dhaalu	111	5	22.20	1,472	79	18.63	314	36	8.72	-	-	-	1,897	120	15.81
Thaa	462	21	22.00	2,709	138	19.63	820	49	16.73	-	-	-	3,991	208	19.19
Laamu	322	22	14.64	3,488	147	23.73	1,076	61	17.64	-	-	-	4,886	230	21.24
Gaafu Alifu	304	21	14.48	2,384	108	22.07	600	45	13.33	-	-	-	3,288	174	18.90
Gaafu Dhaalu	829	61	13.59	3,535	152	23.26	893	74	12.07	-	-	-	5,257	287	18.32
Gnaviyani	488	12	40.67	2,199	111	19.81	584	46	12.70	-	-	-	3,271	169	19.36
Seenu	1,262	48	26.29	4,954	230	21.54	1,808	118	15.32	82	7	11.71	8,106	403	20.11

*This table does not include supervisors, assistant headmasters, headmasters, assistant principals, principals who may teach in addition to their administrative duties. The total enrolment does not include the physically handicapped students.*

STR - Student Teacher Ratio

ދިވެހިރާއްޖޭގެ ޖުމްހޫރިއްޔާ ގުޅިގެން ދިވެހިރާއްޖޭގެ ސަރުކާރުގެ ޖުމްހޫރިއްޔާ ގުޅިގެން  
**ENROLMENT AND STUDENT TEACHER RATIO OF MALE' AND ATOLLS**  
 (MARCH 2002)



(މާރޗް 2002 ގައި މިރަށުގެ ފަރާތްތަކުގެ އަދަދު)

SCHOOLS, ENROLMENT AND TEACHERS BY MALE' AND ATOLLS  
(MARCH 2002)

Locality	Schools		Students	Teachers			Student Teacher Ratio (Trained Teachers)
	Enrol <500	Enrol >=500	(Both Sexes)	Total	Trained	Untrained	
<b>Republic</b>	<b>261</b>	<b>61</b>	<b>106,220</b>	<b>5,616</b>	<b>3,819</b>	<b>1,797</b>	<b>27.81</b>
<b>Male'</b>	<b>6</b>	<b>16</b>	<b>28,243</b>	<b>1,478</b>	<b>1,210</b>	<b>268</b>	<b>23.34</b>
<b>Atolls</b>	<b>255</b>	<b>45</b>	<b>77,977</b>	<b>4,138</b>	<b>2,609</b>	<b>1,529</b>	<b>29.89</b>
Haa Alifu	22	3	6,170	316	189	127	32.65
Haa Dhaalu	16	4	6,917	327	204	123	33.91
Shaviyani	14	4	4,513	259	174	85	25.94
Noonu	17	3	4,313	206	132	74	32.67
Raa	13	5	6,316	348	180	168	35.09
Baa	15	2	4,009	233	197	36	20.35
Lhaviyani	9	2	3,548	195	136	59	26.09
Kaafu	11	1	3,050	156	104	52	29.33
Alifu Alifu	15		1,619	107	46	61	35.20
Alifu Dhaalu	10	2	2,782	156	82	74	33.93
Vaavu	5		627	35	21	14	29.86
Meemu	9	1	1,911	121	81	40	23.59
Faafu	4	1	1,506	88	58	30	25.97
Dhaalu	9		1,897	120	86	34	22.06
Thaa	14	3	3,991	208	118	90	33.82
Laamu	14	3	4,886	230	132	98	37.02
Gaafu Alifu	14	1	3,288	174	119	55	27.63
Gaafu Dhaalu	23	2	5,257	287	188	99	27.96
Gnaviyani	6	2	3,271	169	130	39	25.16
Seenu	15	6	8,106	403	232	171	34.94

*This table does not include supervisors, assistant headmasters, headmasters, assistant principals and principals who may teach in addition to their administrative duties.*

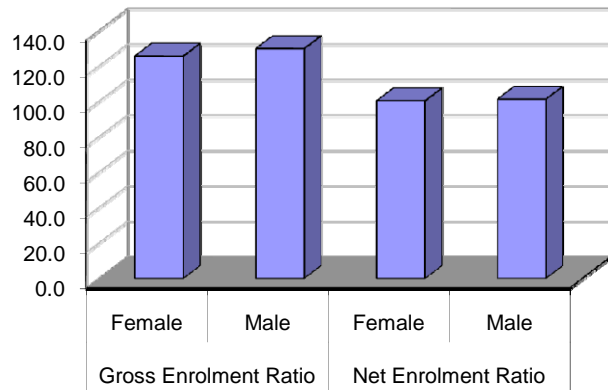
*This table includes pre-primary teachers*

دھندلہ برصغیر ہندوستان (کشمیر و جاکم)  
 GROSS AND NET ENROLMENT RATIO  
 (MARCH 2002)

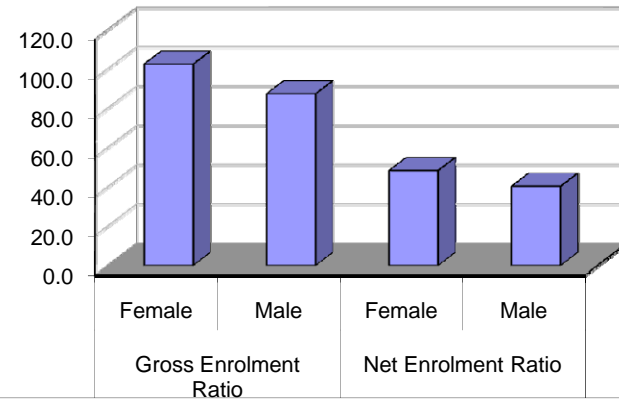
Level / Age Group	Population*			Enrolment (Official age)			Enrolment			Gross Enrolment Ratio			Net Enrolment Ratio		
	Female	Male	Both Sexes	Female	Male	Both Sexes	Female	Male	Both Sexes	Female	Male	Both Sexes	Female	Male	Both Sexes
Primary level (Gr. 1 - 7) Age 6 - 12	26104	27274	53378	26212	27655	53867	32801	35441	68242	125.7	129.9	127.8	100.4	101.4	100.9
Lower Secondary level (Gr 8 - 10) Age 13 - 15	12356	12875	25231	5967	5191	11158	12656	11247	23903	102.4	87.4	94.7	48.3	40.3	44.2
Higher Secondary level (Gr11 - 12) Age 16 - 17	7640	7805	15445	136	116	252	504	627	1131	6.6	8.0	7.3	1.8	1.5	1.6
Primary and L.Secondary level (Gr. 1 - 10) Age 6 - 15	38460	40149	78609	32300	32884	65184	45457	46688	92145	118.2	116.3	117.2	84.0	81.9	82.9

\*Source: Projected mid-year population by age and sex for 2002, MPND

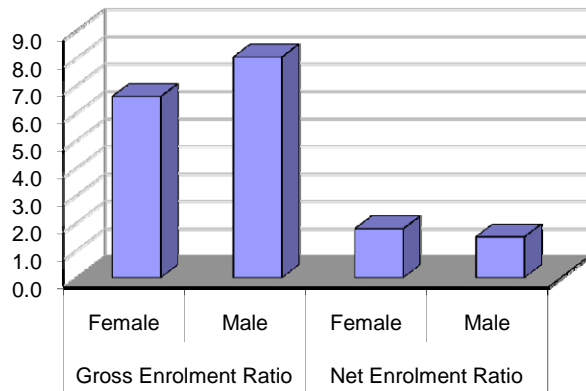
**Primary (Grade 1 - 7)  
Age 6 - 12**



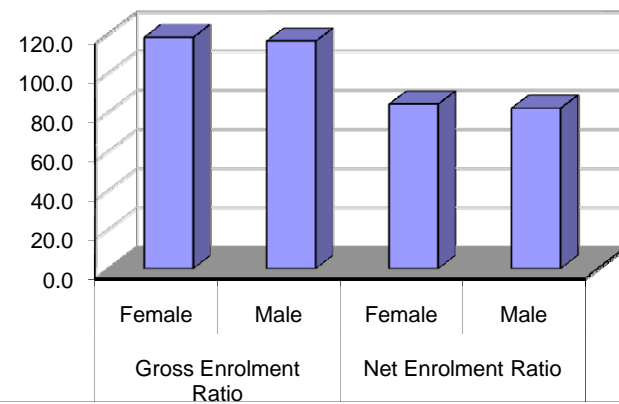
**Lower Secondary (Grade 8 - 10)  
Age 12 - 15**



**Higher Secondary (Grade 11 - 12)  
Age 16 - 17**



**Primary and Lower Secondary (Grade 1 - 10)  
Age 6 - 15**



© 2002, Ministry of Education, Republic of Maldives  
**ISBN 99915-61-26-9**  
Planning, Statistics and Technology Services,  
Ministry of Education  
Ghaazee Building, Male' 20-05, Republic of Maldives.  
Tel: (960) 323261, 323262 Fax: (960) 321201  
E-mail: [e\\_sec@thauleem.net](mailto:e_sec@thauleem.net)  
URL: <http://www.thauleem.net>